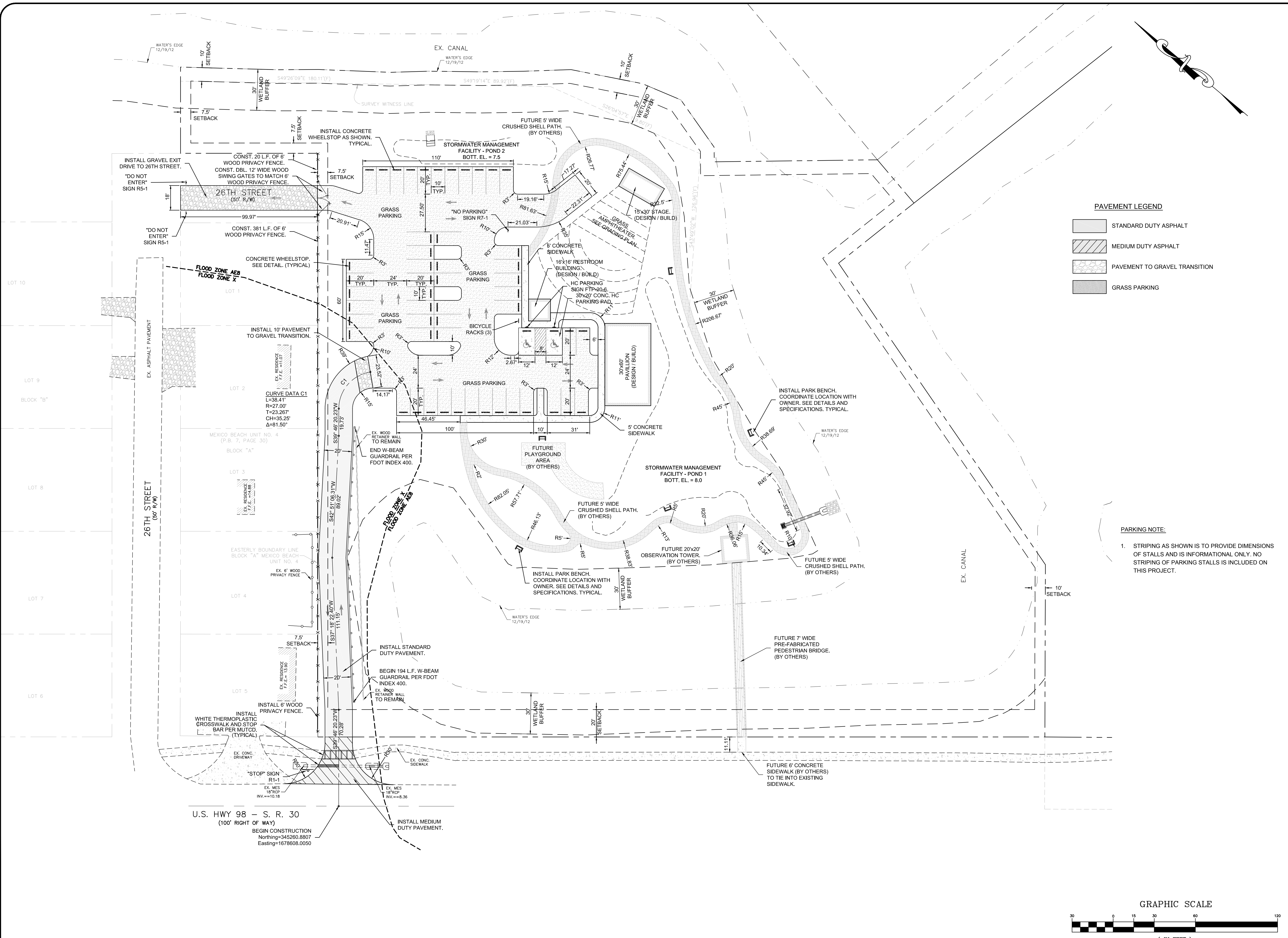


JUN 23, 2016 (15:41:04 EST)
 K:\035.170 MEXICO BEACH PARKER CITY PARK\CIVIL\3DFOLDER\PRODUCTION\035170-SITE.DWG RAYS

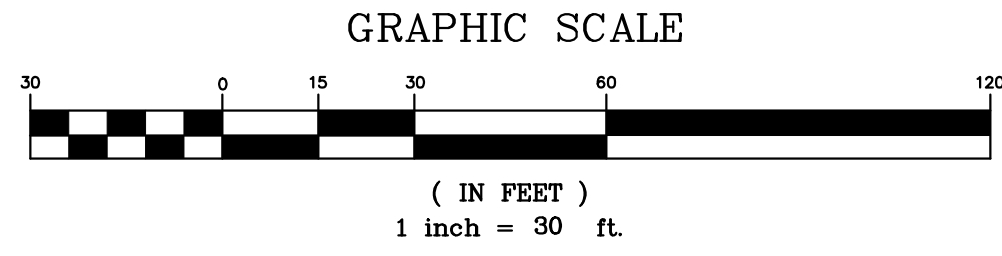


PAVEMENT LEGEND

	STANDARD DUTY ASPHALT
	MEDIUM DUTY ASPHALT
	PAVEMENT TO GRAVEL TRANSITION
	GRASS PARKING

PARKING NOTE:

- STRIPING AS SHOWN IS TO PROVIDE DIMENSIONS OF STALLS AND IS INFORMATIONAL ONLY. NO STRIPING OF PARKING STALLS IS INCLUDED ON THIS PROJECT.



U.S. HWY 98 - S. R. 30
 (100' RIGHT OF WAY)
 BEGIN CONSTRUCTION
 Northing=345280.8807
 Easting=1678608.0050

NO.	DATE	APPR.	REVISION
1			
2			
3			
4			
5			
6			
7			

NOT A PROFESSIONAL ENGINEER'S SEAL
 PROFESSIONAL ENGINEER'S SEAL
 PHILIP A. JONES 49501
 ELIZABETH S. MOORE 57407
 CHRIS SHORTT 78424
 JONATHAN SKLARSKI 67281
 CLIFFORD D. NELSON 873971
 EB 0000155

PREBLE-RISH INC
 CONSULTING ENGINEERS AND SURVEYORS
 CIVIL SURVEYING • SITE PLANNING
 203 ABERDEEN PKWY, PANAMA CITY, FL 32405
 (850) 522-0644

SCALE: 1"=30'	DESIGNED: BDB	DRAWN: MLM	CHECKED: BDB	DATE: JUNE 2016
---------------	---------------	------------	--------------	-----------------

PREBLE-RISH, INC. ALL RIGHTS RESERVED. NO PART OF THIS DOCUMENT MAY BE REPRODUCED OR TRANSMITTED IN ANY FORM WITHOUT WRITTEN AUTHORIZATION OF PREBLE-RISH, INC.

SITE GEOMETRY PLAN
PARKER PROPERTY PARK
CITY OF MEXICO BEACH
BAY COUNTY, FLORIDA

PROJECT NO. 035.170	SHEET C5
---------------------	----------