

# TROUGH & BACK DUNE RESTORATION PLANTING

CITY OF MEXICO BEACH - US HIGHWAY 98



SHEET INDEX	
SHEET:	CONTENT:
L-1	ENLARGED PLANTING PLANS - 7TH STREET TO EXISTING DUNE WALKOVER 'A'
L-2	ENLARGED PLANTING PLANS - 6TH STREET AND EXISTING DUNE WALKOVERS 'A' & 'B'
L-3	ENLARGED PLANTING PLANS - 4TH STREET AND EXISTING DUNE WALKOVERS 'B' & 'C'
L-4	ENLARGED PLANTING PLANS - 1ST STREET AND EXISTING DUNE WALKOVER 'C'
L-5	ENLARGED PLANTING PLANS - EXISTING DUNE WALKOVER 'D' AND DUNE WALKOVER BETWEEN SEA STREET AND CR 386
L-6	ENLARGED PLANTING PLANS - DUNE WALKOVER BETWEEN SEA STREET AND CR 386 AND EXISTING DUNE WALKOVER 'E'
L-7	PLANTING SCHEDULE, NOTES & DETAILS
L-8	PLANT IMAGES: NATIVE DUNE GRASSES, GROUNDCOVERS, SHRUBS AND VINES
L-9	PLANT IMAGES: NATIVE, COASTAL TREES AND PALMS

## PROJECT SCOPE AND DESIGN OBJECTIVES:

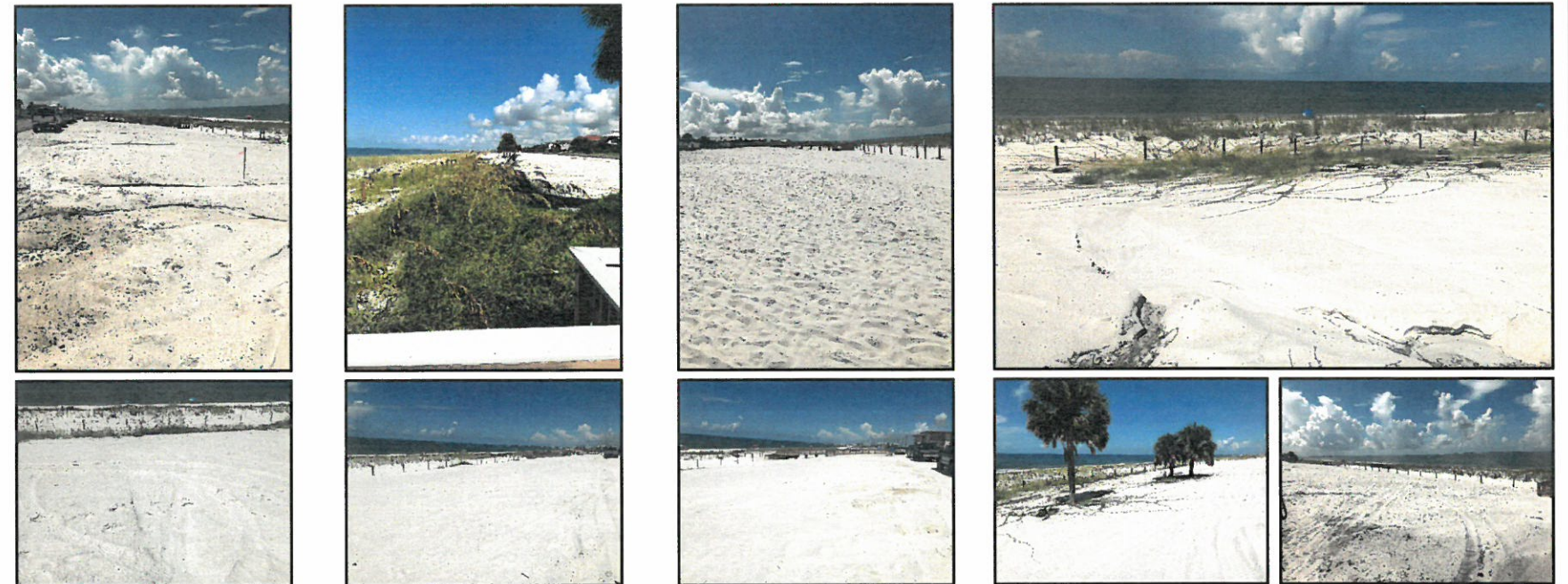
The Mexico Beach back-dune trough restoration planting project is approximately 1.22 miles in length. The typical, average width is approximately 100 feet. The overarching objective is to establish a vigorous, resilient and dense native plant community to protect the upland and shoreline from storm surge, high winds and erosion from stormwater runoff. In addition, another goal of the plan is to create a random natural appearance. Therefore, the contractor and landscape architect will make field adjustments throughout the overall length to allow for pedestrian access at previously designated points and to also create visual interest and reinforce the notion of a random natural aesthetic.



## PROJECT EXTENTS



## EXISTING CONDITIONS



PREPARED BY:  
**THE PATRICK HODGES LAND STUDIO**  
 PLANNING • URBAN DESIGN • LANDSCAPE ARCHITECTURE  
 1701 17th Street, Suite 100  
 Melbourne, Florida, FL 32901  
 Phone: (850) 528-1925  
 Email: info@patrickhodges.com



PREPARED FOR:  
**Mario Gisbert**  
 City Administrator  
 City of Mexico Beach, Florida  
 Office: (850) 656-5700  
 Cell: (850) 258-6179  
 Email: m.gisbert@mxico-beach.gov  
 Website: <http://www.mexico-beach.gov>

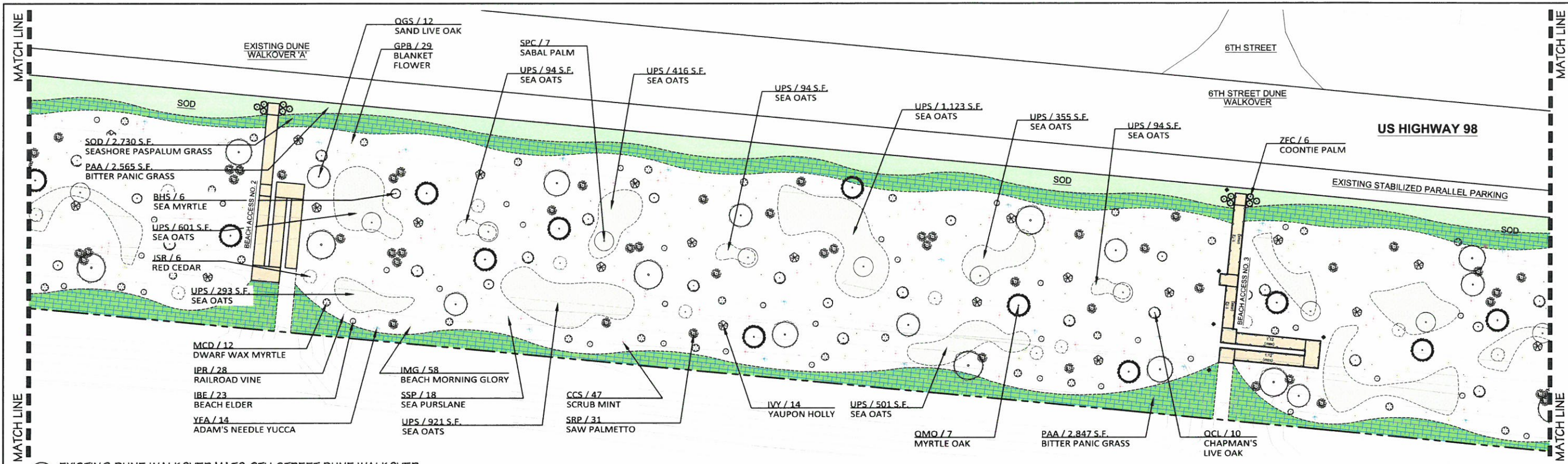
**Dewberry**  
 324 MARINA DRIVE  
 PORT ST. JOE, FL 32456  
 (850)227-7200



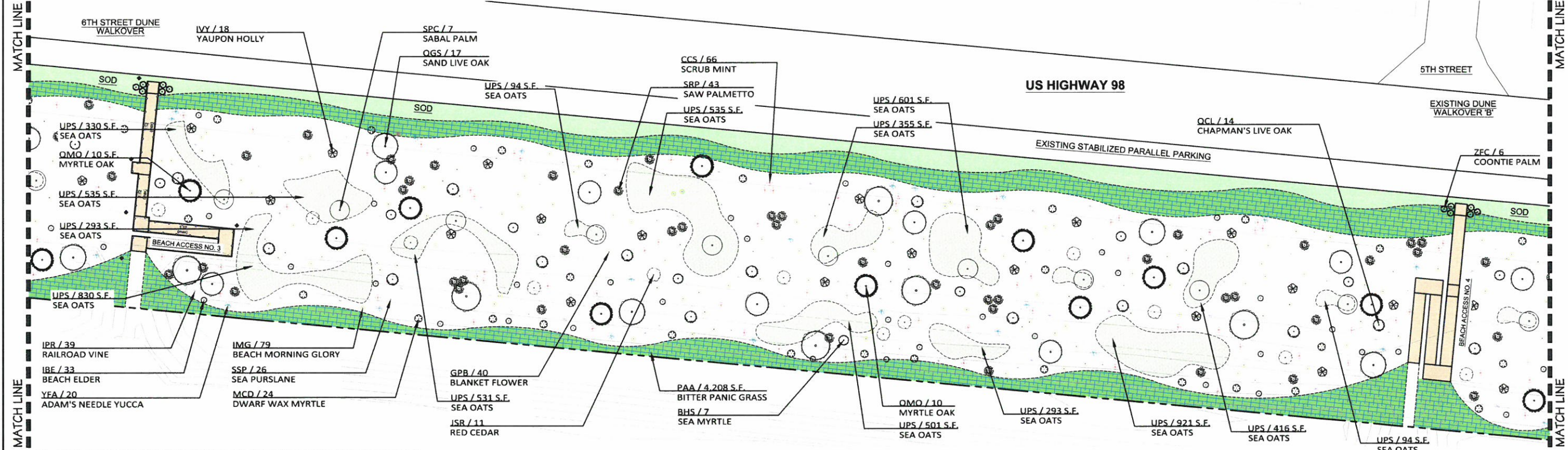
TROUGH AND BACK DUNE RESTORATION PLANTING  
 CITY OF MEXICO BEACH - US HIGHWAY 98

DESIGNED BY: HODGES  
 DRAWN BY: BVL  
 REVIEWED BY: PHODGES  
 DATE: OCTOBER 1, 2020

**COVER**



**A** EXISTING DUNE WALKOVER 'A' TO 6TH STREET DUNE WALKOVER  
SCALE: 1" = 10' - 0"

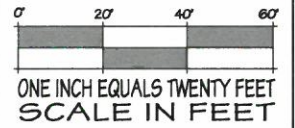


**B** 7TH STREET DUNE WALKOVER TO EXISTING DUNE WALKOVER 'B'  
SCALE: 1" = 10' - 0"

PREPARED BY:  
**THE PATRICK HODGES LAND STUDIO**  
 PLANNING • URBAN DESIGN • LANDSCAPE ARCHITECTURE  
 1001 N. W. 10th St., Suite 101  
 Ft. Lauderdale, FL 33304  
 Phone: (850) 528-1925  
 Email: phl@patrickhodges.com  
 Florida License No. LC000050



ENLARGED PLANTING PLANS



**Dewberry**  
 324 MARINA DRIVE  
 PORT ST. JOE, FL 32456  
 (850)227-7200



TROUGH AND BACK DUNE RESTORATION PLANTING  
 CITY OF MEXICO BEACH - US HIGHWAY 98  
 6TH STREET AND EXISTING DUNE WALKOVERS 'A' & 'B'

DESIGNED BY: HODGES  
 DRAWN BY: BKL  
 REVIEWED BY: PHW/RMG  
 DATE: OCTOBER 1, 2020

**PLANTING SCHEDULE:**

**TREES**

- JSR 96 JUNIPERUS SILICICOLA - SOUTHERN RED CEDAR - 15 GALLON RANDOM NATURAL SPACING AS INDICATED ON THE PLAN OR AS OTHERWISE DIRECTED ON SITE BY THE LANDSCAPE ARCHITECT OF RECORD
- QCL 135 QUERCUS CHAPMANII - CHAPMAN'S LIVE OAK - 10 GALLON RANDOM NATURAL SPACING AS INDICATED ON THE PLAN OR AS OTHERWISE DIRECTED ON SITE BY THE LANDSCAPE ARCHITECT OF RECORD
- QGS 156 QUERCUS GEMINATA - SAND LIVE OAK - 30 GALLON OR B&B RANDOM NATURAL SPACING AS INDICATED ON THE PLAN OR AS OTHERWISE DIRECTED ON SITE BY THE LANDSCAPE ARCHITECT OF RECORD
- QMO 96 QUERCUS MYRTIFOLIA - MYRTLE OAK - 15 GALLON RANDOM NATURAL SPACING AS INDICATED ON THE PLAN OR AS OTHERWISE DIRECTED ON SITE BY THE LANDSCAPE ARCHITECT OF RECORD

**PALMS**

- SPC 93 SABAL PALMETTO SABAL PALM (AKA CABBAGE PALM) 50' OC 14' AVERAGE CLEAR-TRUNK HT ENHANCED ROOTBALL; REGENERATED WITH NO HURRICANE- CUTS; SECURE HEAD (FRONDS) WITH A JUTE CORD

**SHRUBS**

- CCR 577 CONRADINA CANESCENS - SCRUB MINT (AKA FALSE ROSEMARY) 1-GALLON RANDOM NATURAL SPACING AS INDICATED ON THE PLAN OR AS OTHERWISE DIRECTED ON SITE BY THE LANDSCAPE ARCHITECT OF RECORD
- BHS 85 BACCHARIS HALIMIFOLIA - SEA MYRTLE (SEA GROUNDSEL) 3-GALLON RANDOM NATURAL SPACING AS INDICATED ON THE PLAN OR AS OTHERWISE DIRECTED ON SITE BY THE LANDSCAPE ARCHITECT OF RECORD
- IVY 167 ILEX VOMITORIA - YAUPON HOLLY 3 GALLON 90% FEMALE PLANTS RANDOM NATURAL SPACING AS INDICATED ON THE PLAN OR AS OTHERWISE DIRECTED ON SITE BY THE LANDSCAPE ARCHITECT OF RECORD
- MCD 188 MYRICA CERIFERA PUSILLA - DWARF WAX MYRTLE 3 GALLON RANDOM NATURAL SPACING AS INDICATED ON THE PLAN OR AS OTHERWISE DIRECTED ON SITE BY THE LANDSCAPE ARCHITECT OF RECORD
- SRP 371 SERENOA REPENS - SAW PALMETTO - 3-GALLON RANDOM NATURAL SPACING AS INDICATED ON THE PLAN OR AS OTHERWISE DIRECTED ON SITE BY THE LANDSCAPE ARCHITECT OF RECORD
- YFA 155 YUCCA FILAMENTOSA - ADAM'S NEEDLE - 2 GALLONS RANDOM NATURAL SPACING AS INDICATED ON THE PLAN OR AS OTHERWISE DIRECTED ON SITE BY THE LANDSCAPE ARCHITECT OF RECORD
- ZFC 60 ZAMIA FLORIDANA - COONTIE - 7 GALLON AS INDICATED ON THE PLAN AT ELEVATED BEACH ACCESS BOARDWALKS

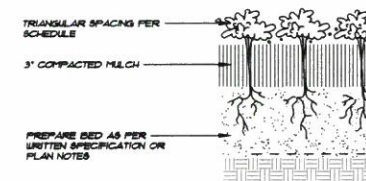
**HERBACEOUS PLANTS, FLOWERING GROUNDCOVERS & VINES**

- GPB 376 GAILLARDIA PULCHELLA - BLANKET FLOWER- FULL GALLONS RANDOM NATURAL SPACING AS INDICATED ON THE PLAN OR AS OTHERWISE DIRECTED ON SITE BY THE LANDSCAPE ARCHITECT OF RECORD
- IMG 726 IPOMOEA IMPERATI - BEACH MORNING GLORY - FULL GALLONS RANDOM NATURAL SPACING AS INDICATED ON THE PLAN OR AS OTHERWISE DIRECTED ON SITE BY THE LANDSCAPE ARCHITECT OF RECORD
- IPR 348 IPOMOEA PES-CAPREA - RAILROAD VINE - FULL GALLONS RANDOM NATURAL SPACING AS INDICATED ON THE PLAN OR AS OTHERWISE DIRECTED ON SITE BY THE LANDSCAPE ARCHITECT OF RECORD
- IBE 276 IVA IMBRICATA - BEACH ELDER (AKA SEASHORE ELDER) - FULL GALLONS RANDOM NATURAL SPACING AS INDICATED ON THE PLAN OR AS OTHERWISE DIRECTED ON SITE BY THE LANDSCAPE ARCHITECT OF RECORD
- PAA +/- 14,023 PANICUM AMARUM VAR. AMARULUM - BITTER PANIC GRASS - 50/50 MIX OF LINERS AND FULL GALLONS 27" OC IN AREAS AS INDICATED ON THE PLAN OR AS OTHERWISE DIRECTED ON SITE BY THE LANDSCAPE ARCHITECT OF RECORD
- SSP 207 SESUVIUM PORTULACASTRUM - SEA PURSLANE - FULL GALLONS RANDOM NATURAL SPACING AS INDICATED ON THE PLAN OR AS OTHERWISE DIRECTED ON SITE BY THE LANDSCAPE ARCHITECT OF RECORD
- UPS +/- 10,582 UNIOLA PANICULATA - SEA OATS 30%/30%/40% MIX OF FULL GALLONS, 2 GALLONS AND 3 GALLONS AT APPROXIMATELY 30" OC
- SOD +/- 33,577 SF PASPALUM VAGINATUM - SEASHORE PASPALUM GRASS LAID SOLIDLY ALONG THE EDGE OF THE STABILIZED ROAD SHOULDER/ PARKING IN A GENTLY UNDULATING LAYOUT AS INDICATED ON PLAN

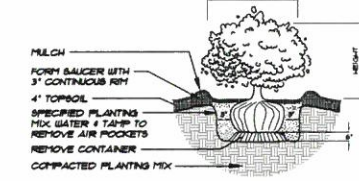
ABBREVIATIONS: A.S. - AS SHOWN B&B - BALLED & BURLAPPED CAL. - CALIPER C.G.S. - CONTAINER GROWN STOCK D.S.R. - DOUBLE STAGGERED ROW HT. - HEIGHT SPRD. - SPREAD O.C. - ON CENTER

**BACK-DUNE PLANTING NOTES & REQUIREMENTS:**

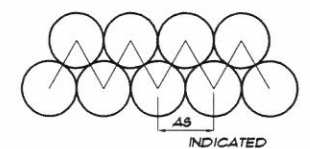
1. THE CONTRACTOR IS RESPONSIBLE FOR OBTAINING ANY PERMITS OR APPROVALS FROM THE FEDERAL, STATE OR LOCAL GOVERNMENT REQUIRED FOR THE WORK INCLUDED IN THIS CONTRACT AND ON THESE DRAWINGS.
2. LOCATE ALL UNDERGROUND UTILITIES, ELECTRICAL WIRING, WATER, SEWER, TELEPHONE, CABLE TV, ETC., PRIOR TO LANDSCAPE OR IRRIGATION INSTALLATION
3. STAKE AND LAYOUT ALL NEW BACK-DUNE PLANTING LOCATIONS FOR REVIEW AND APPROVAL BY THE LANDSCAPE ARCHITECT PRIOR TO EXCAVATION OR PLANTING FOR THE FIRST SEGMENT. PLANTING LOCATIONS ARE SUBJECT TO FIELD ADJUSTMENT BY THE LANDSCAPE ARCHITECT.
4. INSTALL ONLY PLANTS GRADED FLORIDA NO.1 OR BETTER AS SET FORTH IN THE FLORIDA DEPARTMENT OF AGRICULTURE 'GRADES AND STANDARDS FOR NURSERY PLANTS' 2015 EDITION INCLUDING REVISIONS AND WHICH MEET OR EXCEED THE SIZES INDICATED IN THE PLANTING SCHEDULE AND DETAILS.
5. THE ROOT MASS OF ALL PLANTS SHALL BE INSTALLED AT A MINIMUM 6-INCH PLANTING DEPTH.
6. ALL PLANTS SHALL BE FERTILIZED WITH OSMOCOTE PRO (16+11+10+2MgO+TE) SLOW-RELEASED OVER 12-14 MONTHS AT THE MANUFACTURER'S RECOMMENDED APPLICATION RATE. <http://www.osmocote.co.za/product.htm>
7. PLANTING PITS SHALL BE BACKFILLED WITH A MIXTURE OF IN-SITU-SOILS MIXED WITH STOCKOSORB® HYDRO GEL AT THE MANUFACTURER'S RECOMMENDED APPLICATION RATE. <http://www.creasorb.com/>
8. PLANTS SHALL BE INSTALLED USING A RANDOM NATURAL SPACING PATTERN FOLLOWING THE ON-CENTER SPACING RANGE AS SPECIFIED IN THE PLANTING SCHEDULE AS A GENERAL GUIDE.
9. THE CONTRACTOR SHALL WATER THE NEWLY PLANTED AREAS AT THE RATE EQUIVALENT TO 1-INCH OF RAINFALL PER WEEK.
10. INSTALL AN AUTOMATIC UNDERGROUND IRRIGATION SYSTEM WITH 3 TO 4 BUBBLERS AT EACH NEW TREE AND PALM LOCATION AND ALL OTHER SLEEVES, PIPING, SPRAYHEADS, ROTORS, DRIP-EMITTERS, SOLENOID VALVES, ETC. TO ENSURE 100% COVERAGE OF ALL PLANTED AND GRASSED AREAS INCLUDING A BACKFLOW PREVENTER, LIGHTING PROTECTION, A SMART CONTROLLER, MOISTURE-SENSING DEVICES, AND ALL OTHER EQUIPMENT REQUIRED BY LOCAL CODES AND AS NECESSARY FOR A COMPLETE WORKING SYSTEM. PROVIDE SHOP DRAWINGS FOR THE IRRIGATION SYSTEM TO THE LANDSCAPE ARCHITECT FOR REVIEW AND APPROVAL PRIOR TO PROCUREMENT OF EQUIPMENT OR INSTALLATION. PLEASE NOTE THAT PER THE CITY OF MEXICO BEACH WILL PROVIDE A 2" WATERLINE AND TAP FOR THE IRRIGATION SYSTEM.
11. ONE YEAR AFTER THE INSTALLATION IS COMPLETE THE CONTRACTOR SHALL PROVIDE A LETTER OF CERTIFICATION TO THE LANDSCAPE ARCHITECT OF RECORD TO THE CITY OF MEXICO BEACH THAT A MINIMUM OF 85% OF THE PLANTS HAVE SURVIVED.
12. GUARANTEE ALL PLANTS FOR ONE YEAR.
13. ALL PLANTS, MATERIALS AND WORKMANSHIP ARE SUBJECT TO THE APPROVAL OF THE LANDSCAPE ARCHITECT AND THE CITY OF MEXICO BEACH.
14. DO NOT MAKE SUBSTITUTIONS OR REVISIONS, ANY REVISION OR MODIFICATIONS TO THE LANDSCAPE PLAN MUST HAVE PRIOR APPROVAL BY THE LANDSCAPE ARCHITECT AND THE CITY OF MEXICO BEACH.
15. MAINTAIN ALL PLANTING INCLUDING WATERING UNTIL FINAL ACCEPTANCE BY THE CITY OF MEXICO BEACH.
16. THESE DRAWING DOCUMENTS AND ALL CONTENTS ARE COPYRIGHT AND ARE THE PROPERTY OF THE PATRICK K. HODGES ALL RIGHTS ARE RESERVED. UNAUTHORIZED USE OR REPRODUCTION, IN PART OR WHOLE, FOR ANY PURPOSE IS UNLAWFUL AND PROHIBITED EXCEPT BY EXPRESSED WRITTEN CONSENT.



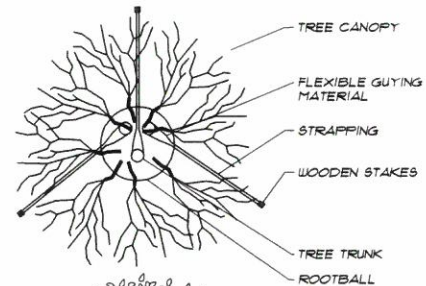
**A GROUNDCOVER PLANTING DETAIL**  
N.T.S.



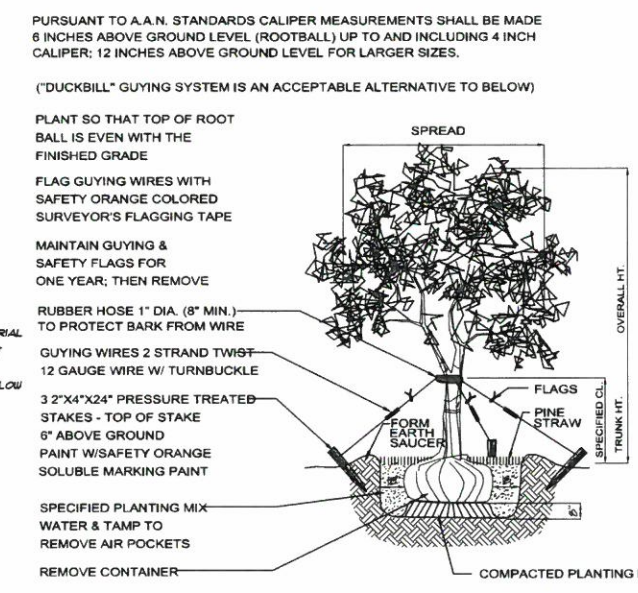
**B SHRUB PLANTING DETAIL**  
N.T.S.



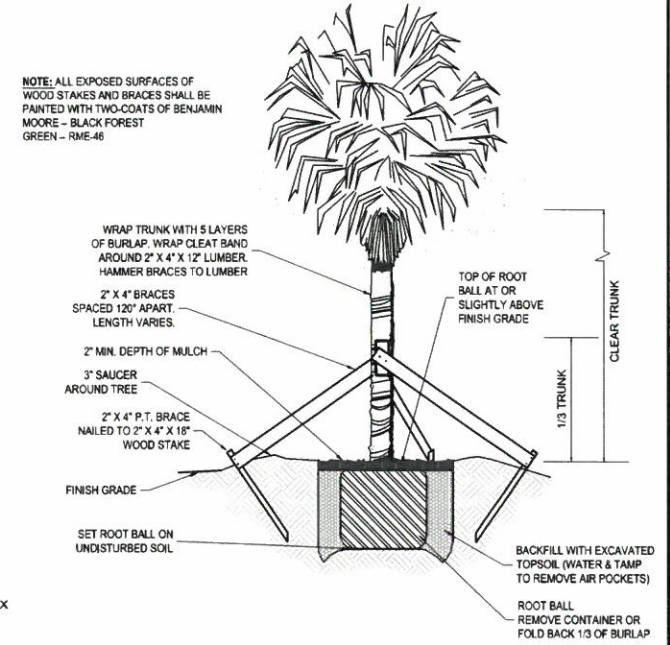
**C TRIANGULAR SPACING DETAIL**  
N.T.S.



**D MULTI-TRUNK TREE PLANTING DETAIL**  
N.T.S.



**E TREE PLANTING DETAIL 1" - 3 1/2" CALIPER SIZE**  
N.T.S.



**F SABAL PALM PLANTING DETAIL**  
N.T.S.

PREPARED BY:  
**THE PATRICK HODGES LAND STUDIO**  
PLANNING + URBAN DESIGN + LANDSCAPE ARCHITECTURE  
11001 W. US HWY 98, SUITE 101  
MEXICO BEACH, FL 32456  
PHONE: (850) 528-1125  
FAX: (850) 528-1125  
FLORIDA LICENSE NO. 00000000



**PLANTING SCHEDULE  
NOTES & DETAILS**

**Dewberry**  
324 MARINA DRIVE  
PORT ST. JOE, FL 32456  
(850)227-7200



**TROUGH AND BACK DUNE RESTORATION PLANTING**  
CITY OF MEXICO BEACH - US HIGHWAY 98

DESIGNED BY: HODGES  
DRAWN BY: BKL  
REVIEWED BY: PH/D/R/M  
DATE: OCTOBER 1, 2020  
**L-7**



beach elder



dune panic grass



coontie



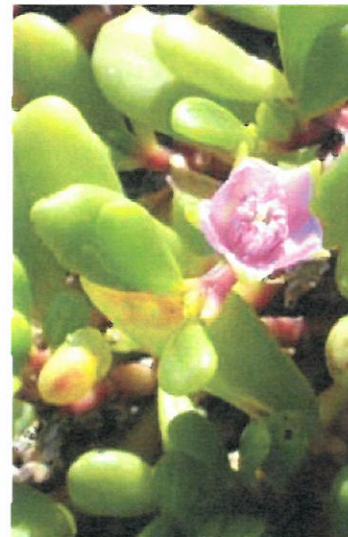
coontie foliage



beach morning glory



railroad vine



sea purslane



seashore paspalum



blanket flower



sea oats



scrub mint



adam's needle yucca



chapman's live oak



southern red cedar



sabal palm



sea myrtle



sand live oak



yaupon holly



myrtle oak - foliage and fruit detail



myrtle oak - habit of growth



myrtle oak - foliage detail