

GRAPHIC SCALE



1 inch = 50 ft.



Moore Bass Consulting, Inc.

- Civil Engineering
- Land Surveying
- Development Consulting
- Landscape Architecture
- Environmental Permitting

www.moorebass.com
TALLAHASSEE • ATLANTA

1350 Keys Ferry Court
McDonough, GA 30253
770.914.9394

CLIENT NAME
BRENT HOLDINGS, LLC
270 N. JEFF DAVIS DRIVE
FAYETTEVILLE, GA 30214

PROJECT NAME

SWEETWATER AT MEXICO BEACH

REVISIONS

A1041.0122-PP-BASE-ENT

DATE 1/31/23

CONTRACT # A1041.0122

DRAWN BY SDS

The Drawings, Specifications and other documents prepared by Moore Bass Consulting, Inc. (MB) for this project are instruments of MB for use solely with respect to the Project and shall remain the property of MB. No part of these documents shall be reproduced, stored in a retrieval system, or transmitted in any form or by any means, electronic, mechanical, photocopying, recording, or by any information storage and retrieval system, without the prior written permission of MB. © 2023 Moore Bass Consulting, Inc. All rights reserved.

1350 KEYS FERRY COURT
MCDONOUGH, GA 30253
LSP #1176

SEAL

SHEET TITLE

36TH STREET CONNECTION

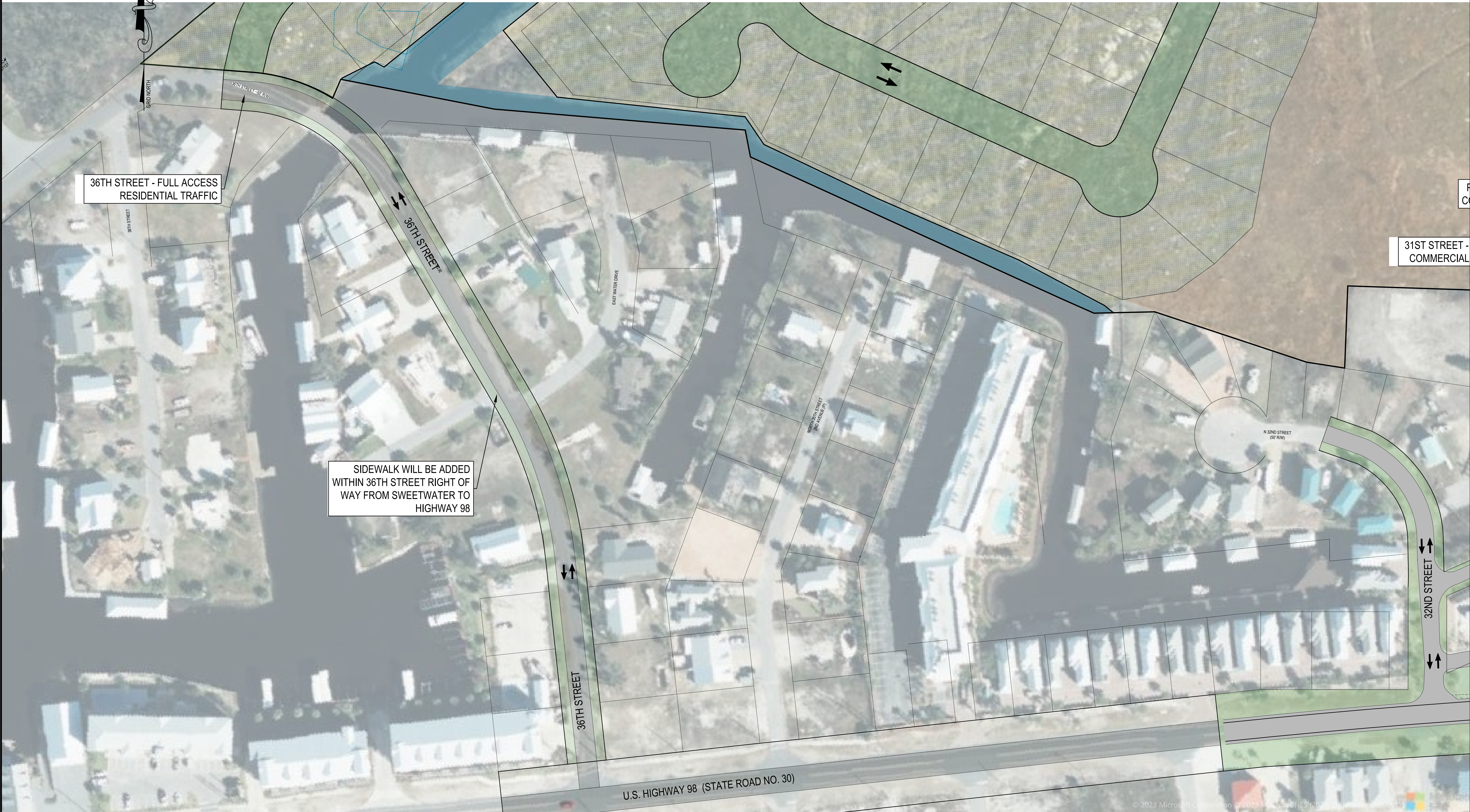
SHEET

3.1

36TH STREET - FULL ACCESS
RESIDENTIAL TRAFFIC

31ST STREET -
COMMERCIAL

SIDEWALK WILL BE ADDED
WITHIN 36TH STREET RIGHT OF
WAY FROM SWEETWATER TO
HIGHWAY 98



C:\Users\mcd\OneDrive\Documents\MB\Working\A1041.0122-PP-BASE-ENT.dwg ENT-PP-BASE-ENT.dwg 1/31/23 5:44:46pm