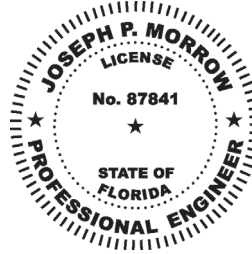


City of Mexico Beach - Nearshore Debris Removal Permit Sketches

Bay County, Florida

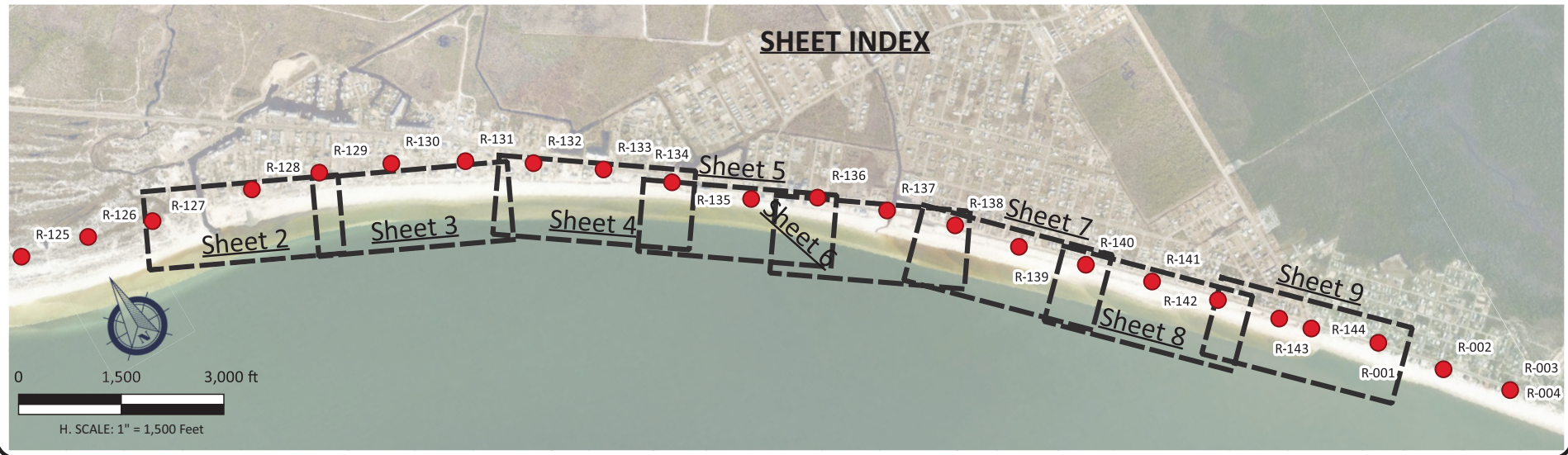
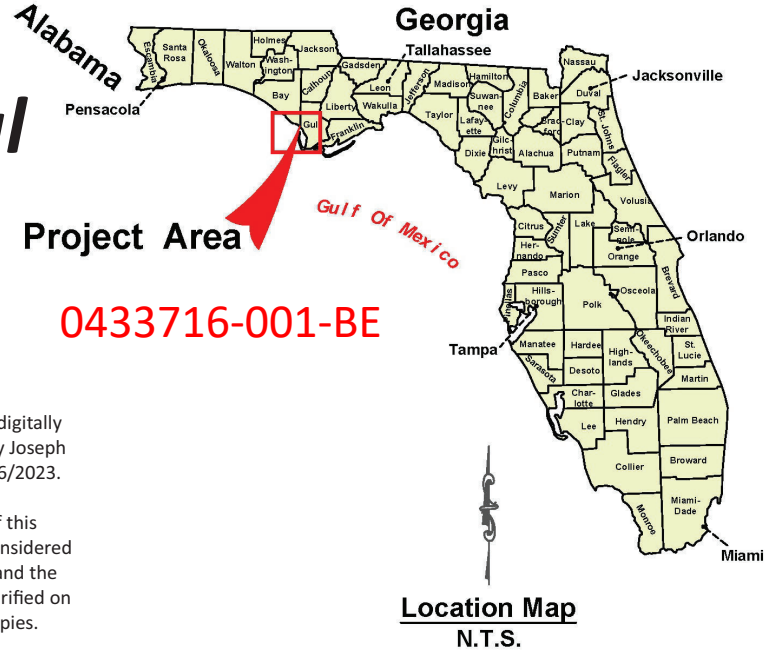
SHEET NO.	DESCRIPTION
1 Cover and Index of Sheets
2 Plan View - Debris Locations (1 of 8)
3 Plan View - Debris Locations (2 of 8)
4 Plan View - Debris Locations (3 of 8)
5 Plan View - Debris Locations (4 of 8)
6 Plan View - Debris Locations (5 of 8)
7 Plan View - Debris Locations (6 of 8)
8 Plan View - Debris Locations (7 of 8)
9 Plan View - Debris Locations (8 of 8)
10 Table of Debris Locations (1 of 2)
11 Table of Debris Locations (2 of 2)
12 Typical Section
13 Typical Barge Section
14 Proposed Staging Areas
15 General Notes

Joseph P Morrow
2023.04.06 14:12:14 -05'00'



This item has been digitally signed and sealed by Joseph Morrow, PE, on 4/06/2023.

Printed copies of this document are not considered signed and sealed and the signature must be verified on any electronic copies.



543 Harbor Boulevard, Suite 204
Destin, Florida 32541
(904) 854-1555 (local) • 850.664.0500 (toll free)
www.mrdassociates.com

mrd
mrd ASSOCIATES, INC.
Civil, Marine & Water Resources Engineering

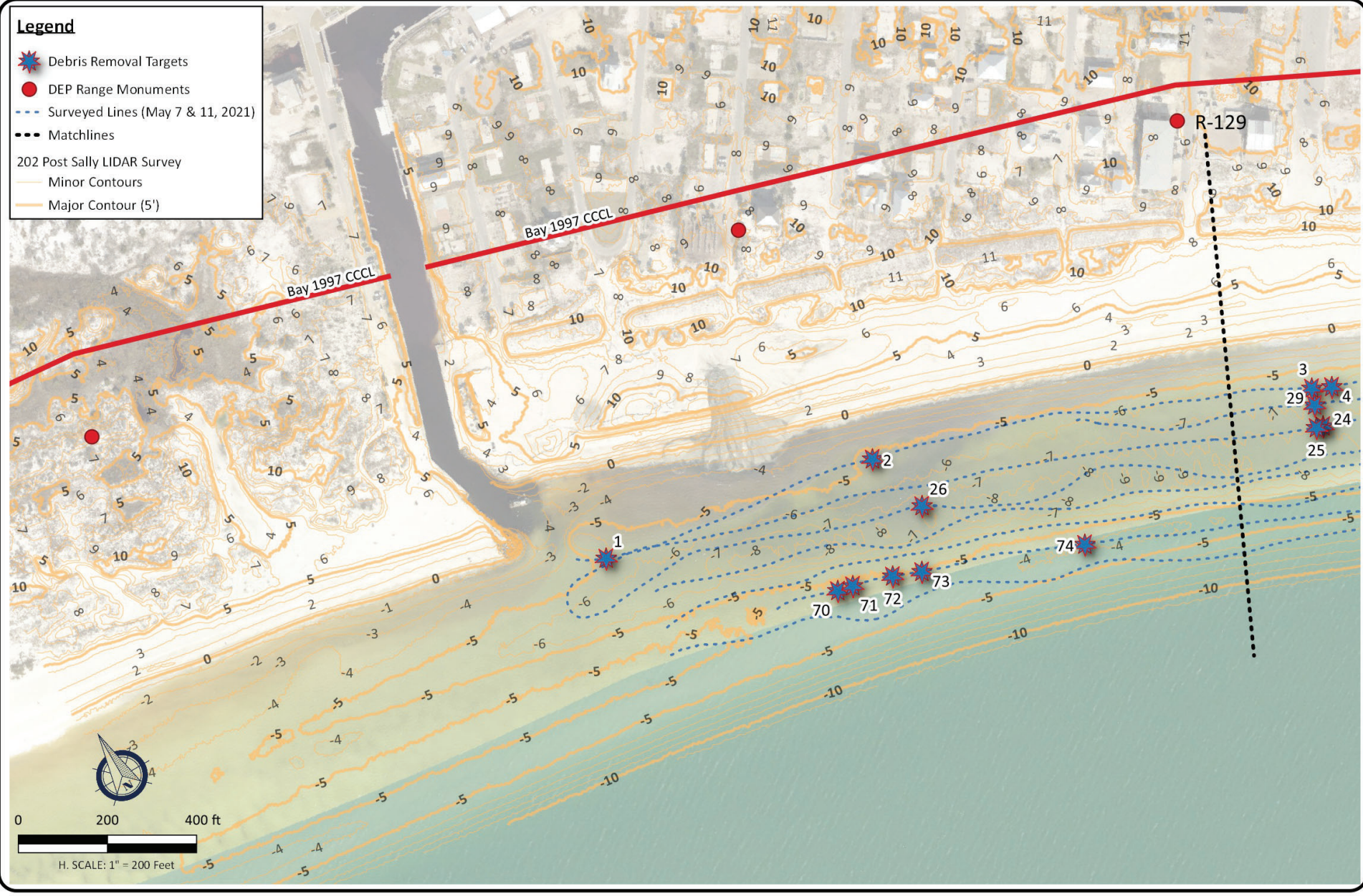
NOTES:
• Drawing is referenced to Florida State Plane, North Zone
• NAD83.

COVER AND INDEX OF SHEETS
MB Nearshore Debris Removal Permit Sketches
DEWBERRY ENGINEERS, INC.
324 Malima Drive, Port St. Joe, FL 32456

DESIGNED BY: mrd
DATE: February 27, 2023
REV DATE:
REV # : DRAWN: JPM
REVIEWED:
PROJECT NUMBER:
23-139
SHEET NUMBER:
1

Legend

-  Debris Removal Targets
-  DEP Range Monuments
-  Surveyed Lines (May 7 & 11, 2021)
-  Matchlines
- 202 Post Sally LIDAR Survey
-  Minor Contours
-  Major Contour (5')



NOTES:

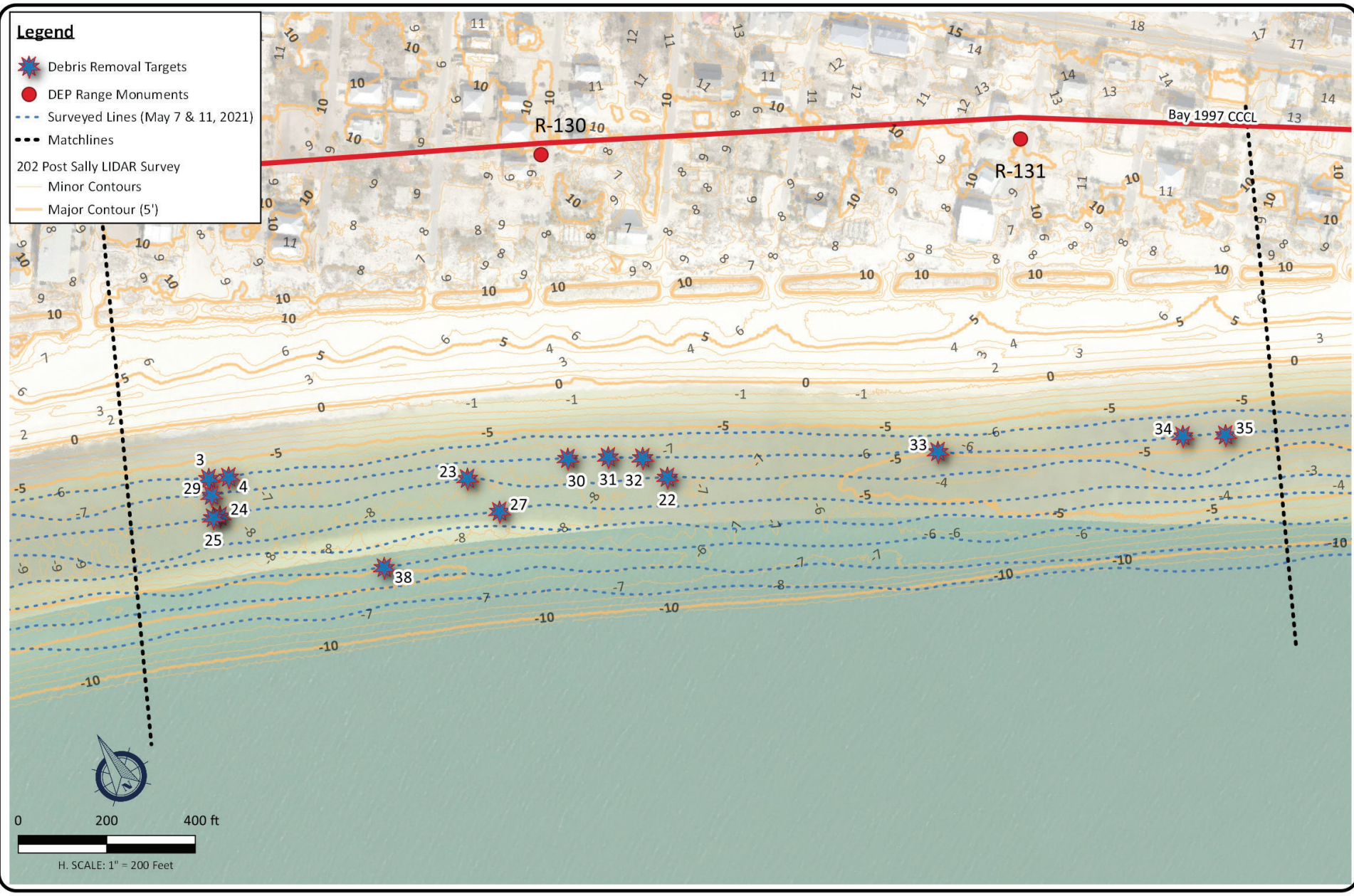
- Drawing is referenced to Florida State Plane, North Zone
- NAD83
- Debris survey conducted on May 7 & May 11, 2021
- Contours from PostHurricane Sally LIDAR survey


DESIGNED BY:  **DATE:** February 27, 2023
REVISED:
REV 1: FEASIBILITY
REVIEWED:
PROJECT NUMBER: 23-138
SHEET NUMBER: 2

PLAN VIEW - DEBRIS LOCATIONS (1 of 8)
MB Nearshore Debris Removal Permit Sketches
DEWBERRY ENGINEERS, INC.
 324 Marina Drive, Port St. Joe, FL 32456

mrd
 543 Hialeah Boulevard, Suite 204
 Doral, Florida 33121
 (954) 684-1155
 8160 Biscayne Blvd., Suite 100
 33138
 www.mrd-engineers.com

- Legend**
-  Debris Removal Targets
 -  DEP Range Monuments
 -  Surveyed Lines (May 7 & 11, 2021)
 -  Matchlines
 - 202 Post Sally LIDAR Survey
 -  Minor Contours
 -  Major Contour (5')





543 Hialeah Boulevard, Suite 204
Doral, Florida 33151
601 S. W. 11th St., Suite 602
818-884-1555 or 818-884-0595 (fax)
www.mrd-engineers.com

NOTES:

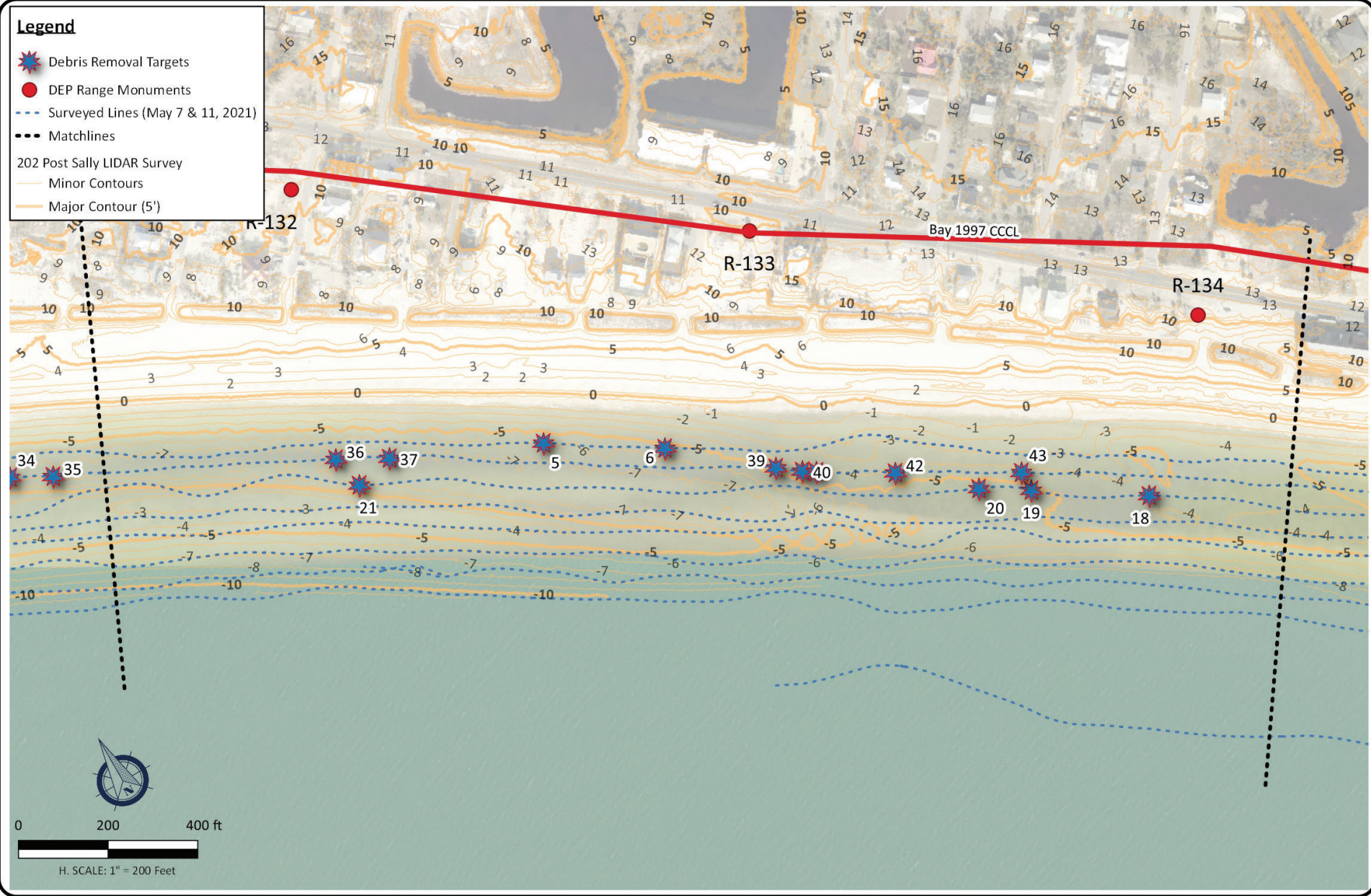
- Drawing is referenced to Florida State Plane, North Zone
- NAD83
- Debris survey conducted on May 7 & May 11, 2021
- Contour from Posthumous Sally LIDAR survey

PLAN VIEW - DEBRIS LOCATIONS (2 of 8)
MB Nearshore Debris Removal Permit Sketches
 DEWBERRY ENGINEERS, INC.
 321 Mainline Drive, Port St. Joe, FL 32456

DESIGNED BY:	mrd
DATE:	February 27, 2023
REV DATE:	
REV #:	FEASIBILITY
REVIEWED:	
PROJECT NUMBER:	23-138
SHEET NUMBER:	3

Legend

-  Debris Removal Targets
-  DEP Range Monuments
-  Surveyed Lines (May 7 & 11, 2021)
-  Matchlines
- 202 Post Sally LIDAR Survey
-  Minor Contours
-  Major Contour (5')



543 Hialeah Boulevard, Suite 204
 Doral, Florida 33151
 (954) 684-1555
 8160 SW 15th Street, Suite 802
 Fort Lauderdale, Florida 33324
 (954) 684-1555
 www.mre-associates.com

mre
 mre associates, inc.
 Coastal Survey & Mapping

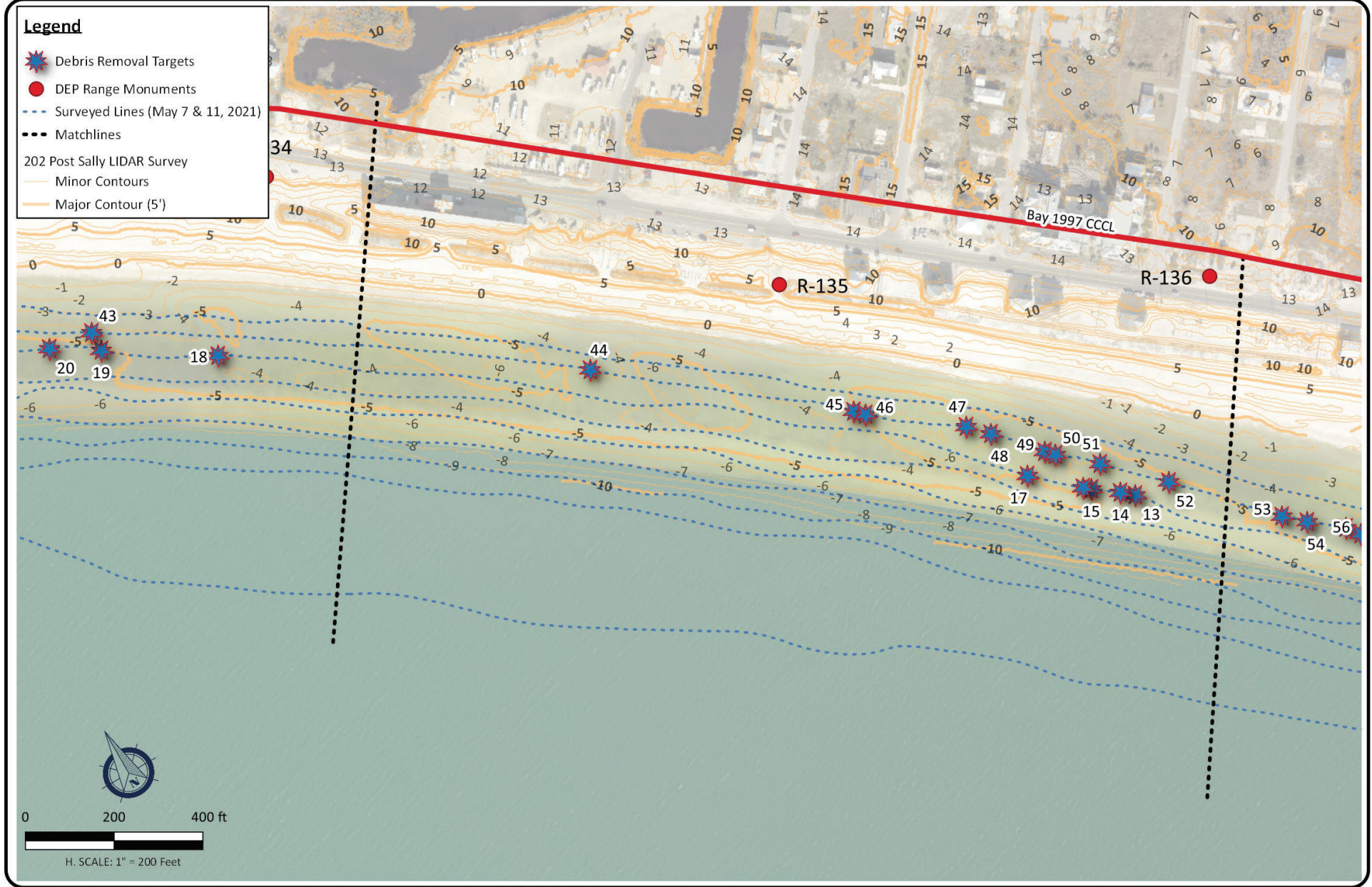
NOTES:
 • Drawing is referenced to Florida State Plane, North Zone
 NAD83
 • Debris survey conducted on May 7 & May 11, 2021
 • Contours from PostHurricane Sally LIDAR survey

DESIGNED BY: **mre**
 DATE: February 27, 2023
 REV DATE:
 REV # REVISION #11
 REVIEWED:
 PROJECT NUMBER: 23-138
 SHEET NUMBER: 4

PLAN VIEW - DEBRIS LOCATIONS (3 of 8)
 MB Nearshore Debris Removal Permit Sketches
 DEWBERRY ENGINEERS, INC.
 321 Marina Drive, Port St. Joe, FL 32456

Legend

-  Debris Removal Targets
-  DEP Range Monuments
-  Surveyed Lines (May 7 & 11, 2021)
-  Matchlines
- 202 Post Sally LIDAR Survey
-  Minor Contours
-  Major Contour (5')



543 Hialeah Boulevard, Suite 204
 Doral, Florida 33151
 (954) 684-1555
 8160 Biscayne Blvd, Suite 100
 Miami, Florida 33154
 www.mre.com

mre
 Mire Engineering, Inc.
 Civil, Survey & Water Resources Engineering

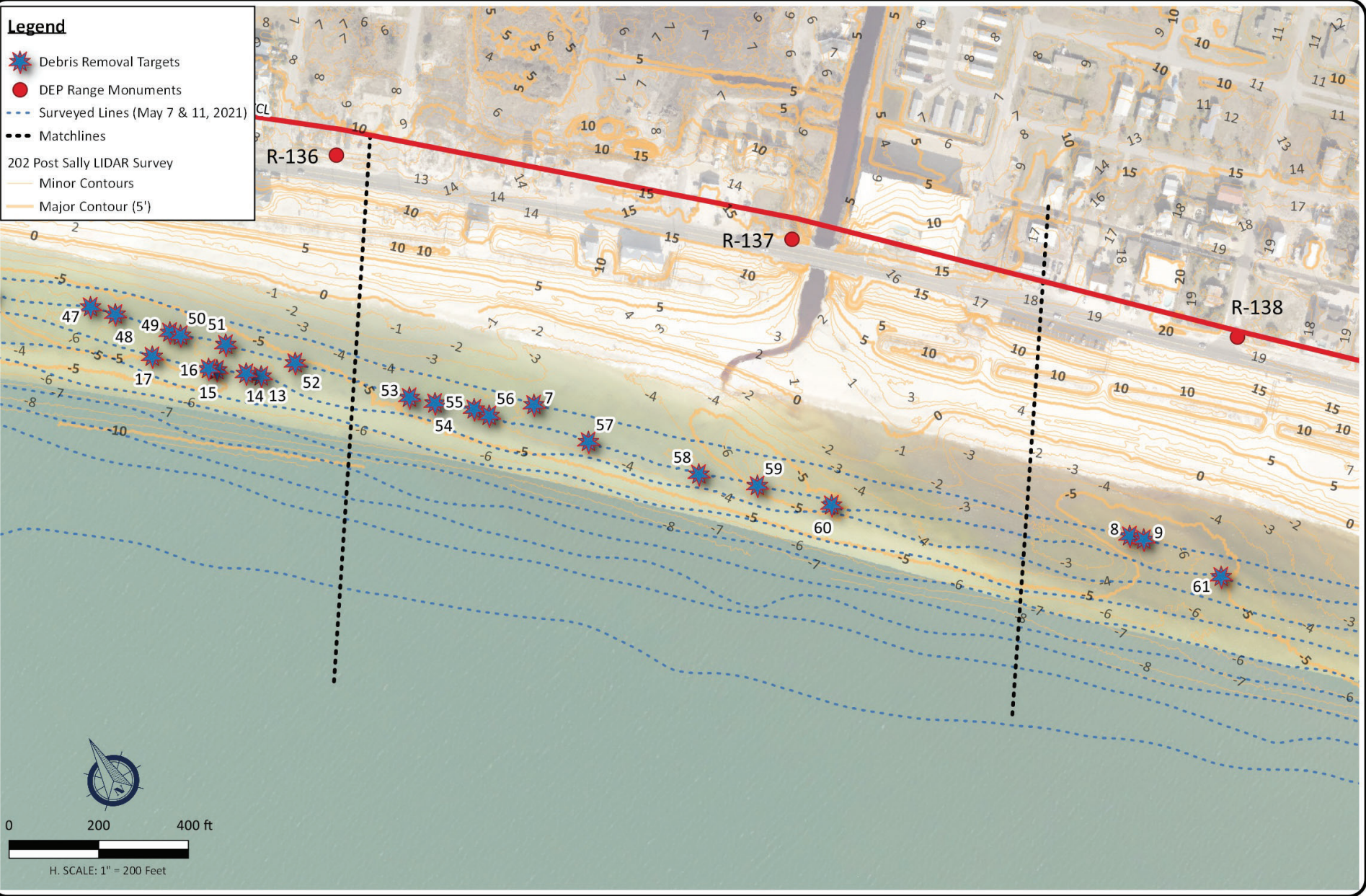
Planning is referenced to Florida State Plane, North Zone
 NAD83
 • Dates shown are for the 7 & 11, 2021
 • Contours from Posthumous Sally LIDAR survey

PLAN VIEW - DEBRIS LOCATIONS (4 of 8)
MB Nearshore Debris Removal Permit Sketches
 DEWBERRY ENGINEERS, INC.
 321 Mainline Drive, Port St. Joe, FL 32456

DESIGNED BY:	mre
DATE:	February 27, 2023
REVISED:	
REV #:	REVISED BY
REVIEWED:	
PROJECT NUMBER:	23-138
SHEET NUMBER:	5

Legend

-  Debris Removal Targets
-  DEP Range Monuments
-  Surveyed Lines (May 7 & 11, 2021)
-  Matchlines
- 202 Post Sally LIDAR Survey
-  Minor Contours
-  Major Contour (5')



NOTES:

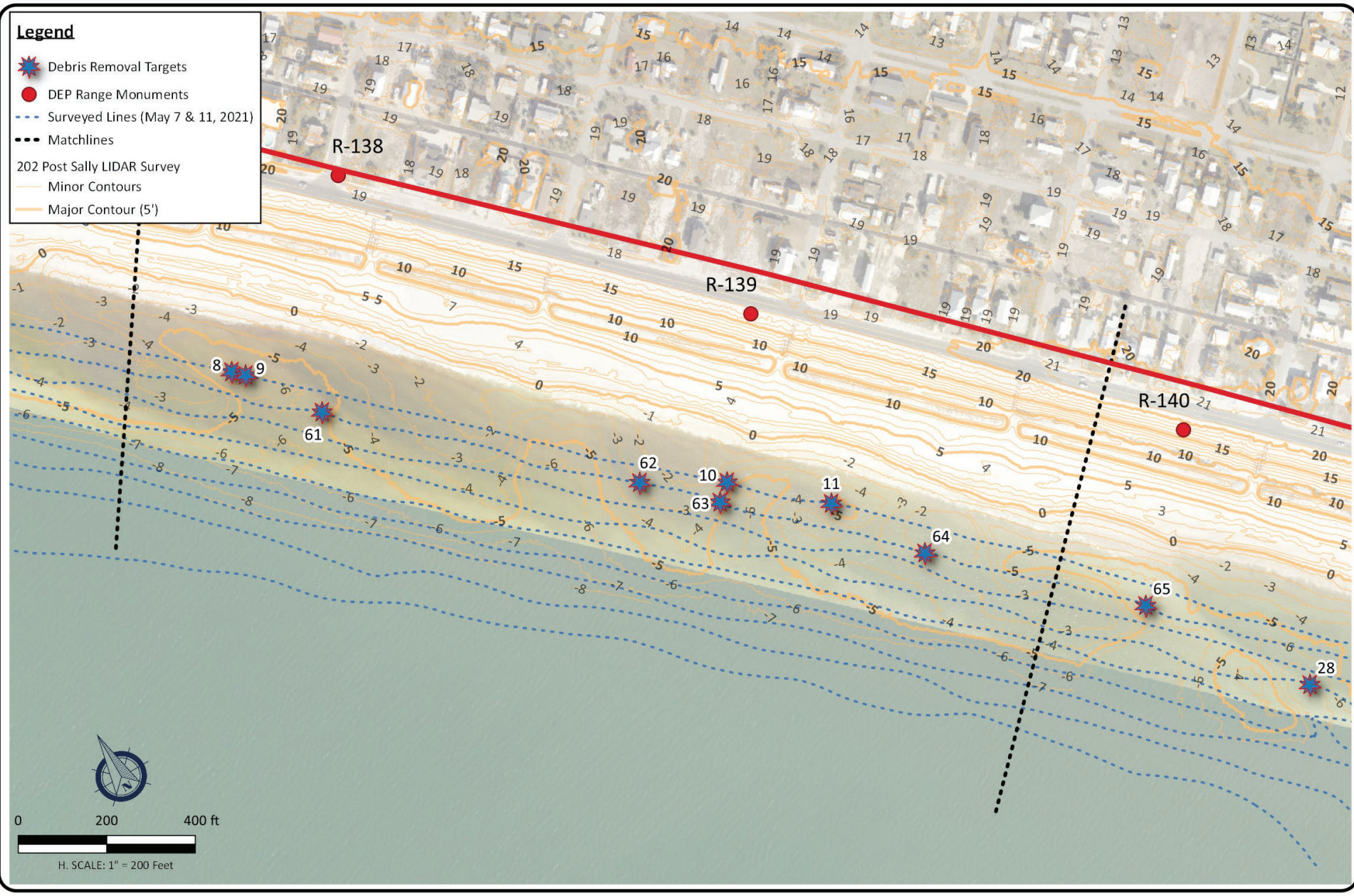
- Drawing is referred to Florida State Plane, North Zone
- NAD83
- Debris survey conducted on May 7 & 11, 2021
- Contour from Post Hurricane Sally LIDAR survey

DESIGNED BY: mrd
 DATE: February 27, 2023
 REV DATE:
 REV # FEASIBILITY
 REVIEWED:
 PROJECT NUMBER: 23-138
 SHEET NUMBER: 6

PLAN VIEW - DEBRIS LOCATIONS (5 of 8)
MB Nearshore Debris Removal Permit Sketches
 DEWBERRY ENGINEERS, INC.
 324 Maina Drive, Port St. Joe, FL 32456

mrd
 543 Hialeah Boulevard, Suite 204
 Doral, Florida 33191
 (954) 684-1555
 8160 Biscayne Blvd, Suite 100
 Miami, Florida 33155
 (305) 884-1555
 www.mrd-engineers.com

- Legend**
-  Debris Removal Targets
 -  DEP Range Monuments
 -  Surveyed Lines (May 7 & 11, 2021)
 -  Matchlines
 - 202 Post Sally LIDAR Survey
 -  Minor Contours
 -  Major Contour (5')



543 Hialeah Boulevard, Suite 204
 Doral, Florida 33191
 (954) 684-1555
 8160 Biscayne Blvd, Suite 8402
 Miami, Florida 33154
 (305) 486-1555
 www.mred.com

mred
 Miami Redesign Associates, Inc.
 Civil, Survey & Water Resources Engineering

NOTES:

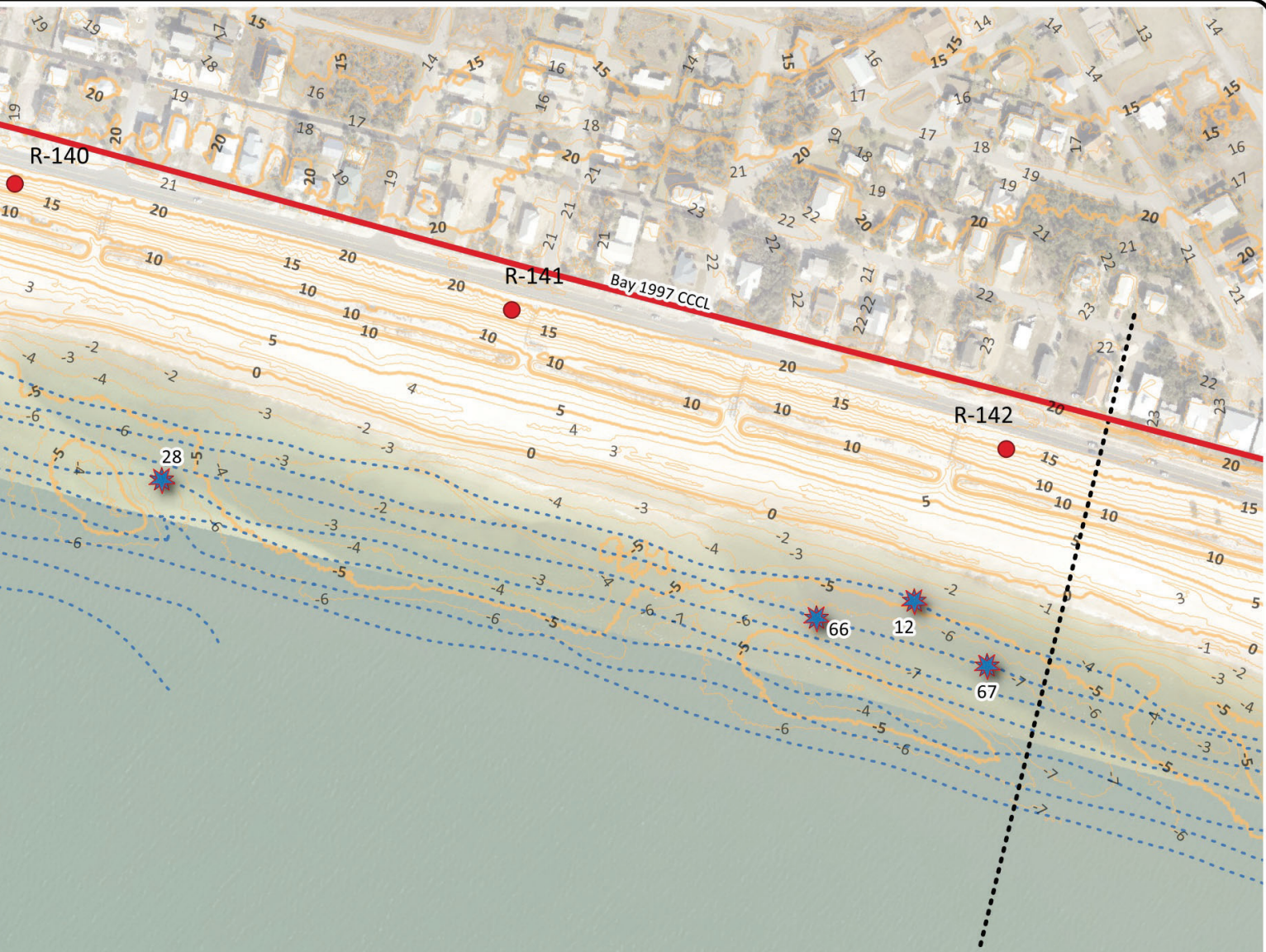
- Drawing is referenced to Florida State Plane, North Zone
- NAD83
- Debris survey conducted on May 7 & May 11, 2021
- Contours from Post Hurricane Sally LIDAR survey

PLAN VIEW - DEBRIS LOCATIONS (6 of 8)
MB Nearshore Debris Removal Permit Sketches
 DEWBERRY ENGINEERS, INC.
 3211 Mainline Drive, Port St. Joe, FL 32456

DESIGNED BY: mred
DATE: February 27, 2023
REV DATE:
REV # REVISION
REVIEWED:
PROJECT NUMBER: 23-138
SHEET NUMBER: 7

Legend

-  Debris Removal Targets
-  DEP Range Monuments
-  Surveyed Lines (May 7 & 11, 2021)
-  Matchlines
- 202 Post Sally LIDAR Survey
-  Minor Contours
-  Major Contour (5')



543 Hialeah Boulevard, Suite 204
 Doral, Florida 33191
 (954) 688-1155
 8160 Biscayne Blvd, Suite 100
 Miami, Florida 33156
 www.mre.com



General Survey & Mapping

NOTES:

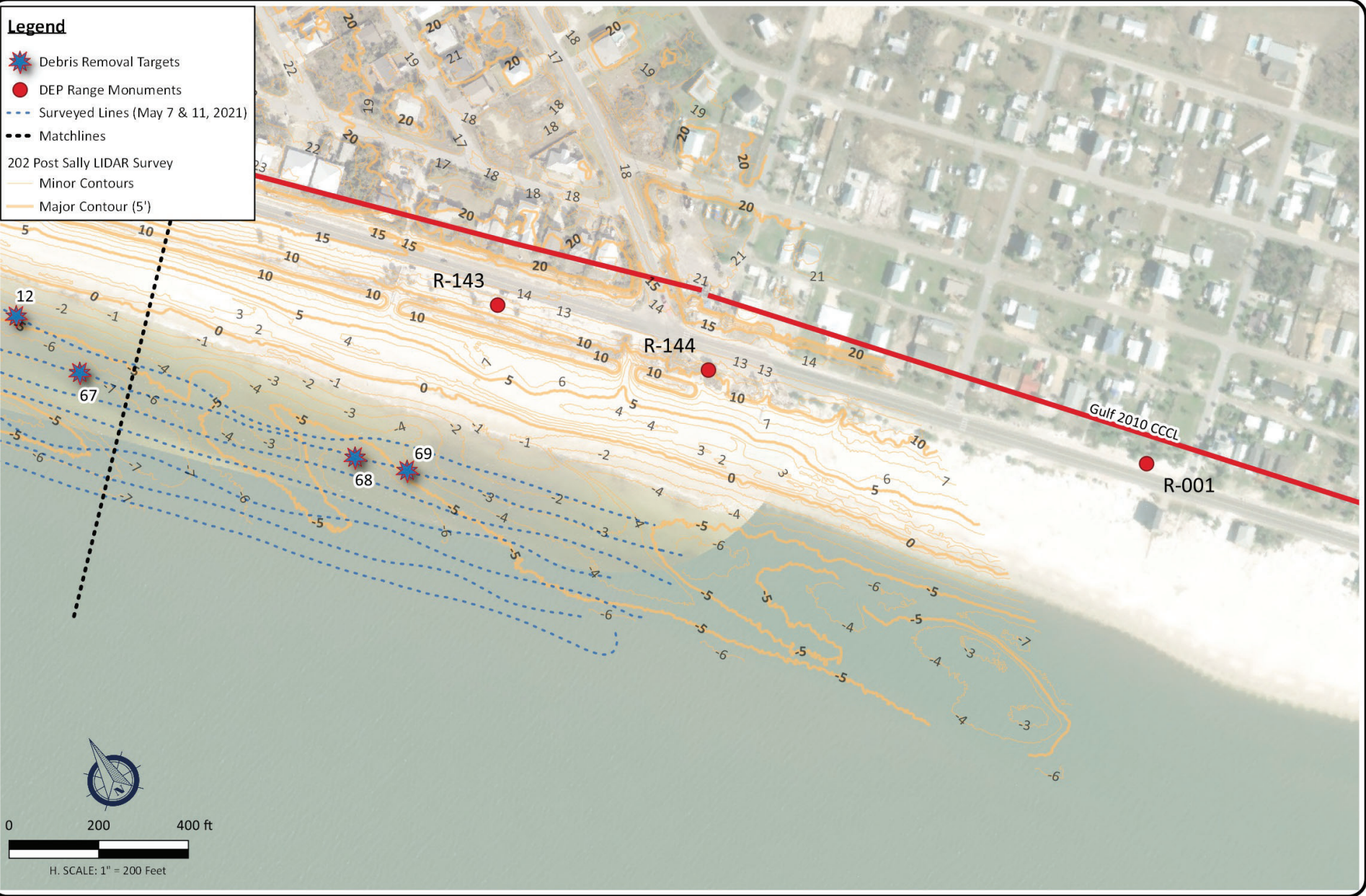
- Drawing is referred to Florida State Plane, North Zone
- NAD83
- Debris survey conducted on May 7 & May 11, 2021
- Contour from Post Hurricane Sally LIDAR survey

PLAN VIEW - DEBRIS LOCATIONS (7 of 8)
MB Nearshore Debris Removal Permit Sketches
 DEWBERRY ENGINEERS, INC.
 324 Marina Drive, Port St. Joe, FL 32456

DESIGNED BY:	mre
DATE:	February 27, 2023
REV:	
REV:	REVISED
PROJECT NUMBER:	23-138
SHEET NUMBER:	8

Legend

-  Debris Removal Targets
-  DEP Range Monuments
-  Surveyed Lines (May 7 & 11, 2021)
-  Matchlines
- 202 Post Sally LIDAR Survey
-  Minor Contours
-  Major Contour (5')



543 Hialeah Boulevard, Suite 204
 Doral, Florida 33191
 (954) 684-1555
 8160 SW 15th Street, Suite 602
 Fort Lauderdale, Florida 33309
 (954) 684-1555
 www.mre-associates.com



Carol Schaefer, P.E., Surveying

NOTES:

- Drawing is referenced to Florida State Plane, North Zone
- NAD83
- Debris survey conducted on May 7 & May 11, 2021
- Contours from Post Hurricane Sally LIDAR survey

DESIGNED BY: **mre**
 DATE: February 27, 2023
 REVISED BY: **FEARFUL**
 PROJECT NUMBER: 23-138
 SHEET NUMBER: 9

PLAN VIEW - DEBRIS LOCATIONS (8 of 8)
MB Nearshore Debris Removal Permit Sketches
 DEWBERRY ENGINEERS, INC.
 324 Mainline Drive, Port St. Joe, FL 32456

DESIGNED BY: **mre**
 DATE: February 27, 2023
 REVISED BY: **FEARFUL**
 PROJECT NUMBER: 23-138
 SHEET NUMBER: 9

TEXT	FID	Northing	Easting	Depth	Volume	Notes
07:51:11	1	346507.81	1673999.23	4	17	45' wide 1' depth (assume 10' wide)
07:53:49	2	346401.9	1674628.55	4	2	5' long 1' deep (assume 10' wide)
07:57:15	3	346046.34	1675562.16	4	18	25' long 2' depth (assume 10' wide)
07:57:23	4	346026.82	1675602.76	3	17	30' long 1.5 deep 10' wide
08:08:39	5	344500.23	1678586.43	4	4	10' long 1' deep Assume 10' wide
08:09:46	6	344354.84	1678815.39	3	2	3' long 2' tall (assume 10' wide)
08:26:17	7	342056.89	1681828	5	1	4' long 1' tall (assume 5' wide)
08:31:04	8	341138.57	1682833.06	4	2	7' long 1.5' tall assume 5' wide
08:31:11	9	341116.13	1682856.38	3	6	8' long 2' tall assume 10' wide
08:35:10	10	340362.65	1683677.65	6	1	6' long 1' tall assume 5' wide
08:36:01	11	340203.25	1683858.04	5	1	6' long 0.5' tall assume 5' wide
08:45:32	12	338370.78	1685740.47	6	1	7' long 0.5' tall assume 5' wide
09:17:55	13	342416.55	1681332.65	2	3	4' wide, 2' tall assume 10' wide (could be associated with line 3, 12:04:52)
09:18:04	14	342438.43	1681306.59	2	3	4' wide, 2' tall assume 10' wide (could be associated with an anomaly between 9:17 & 9:18 on line 4)
09:18:22	15	342477.78	1681253.81	2	1	4' wide, 1' tall assume 5' wide (could be associated with line 3, 12:04:07)
09:18:27	16	342489.59	1681239.13	2	1	4' wide, 1' tall assume 5' wide (could be associated with line 3, 12:04:07)
09:19:02	17	342576.09	1681144.13	2	3.4	6' wide, 1.5' tall assume 10' wide (could be associated with line 3, 12:03:**)
09:26:25	18	343722.85	1679698.82	2	2.2	6' wide, 2' tall, assume 5' wide
09:27:25	19	343864.64	1679476.73	2	6	4' wide, 4' tall, assume 10' wide (may be associated with larger debris field or shell hash, could be associated with line 3, 11:53:44)
09:27:52	20	343926.31	1679377.3	2	3.7	10' long, 1' tall, assume 10' wide (could be associated with line 3, 11:53:44)
09:33:08	21	344624.58	1678183.63	4	1	10' wide 0.5' tall assume 5' wide (could be associated with line 3, 11:46:52 or 11:47:23)
09:40:26	22	345530.55	1676461.25	2	5.2	7' long, 2' tall, assume 10' wide (likely apart of a larger debris/shell hash field to the east of the mark)
09:42:04	23	345754.2	1676068.5	2	2	5' long 2' tall assume 5' wide (likely shell hash based on proximity to anomalies in line 3)
09:44:08	24	345960.1	1675541.6	2	5.5	10' long, 1.5' tall, assume 10' wide (may be associated with 11:33:56 from line 3)
09:44:12	25	345964.41	1675526.94	2	1	5' long, 1' tall, assume 5' wide (may be apart of 09:44:08)
09:53:35	26	346255.13	1674672.33	2	7.4	5' long, 2' tall, assume 20' wide (could be connected to unmarked anomaly on line 4)
10:00:04	27	345653.66	1676094.25	1	2.9	4' long 2' tall, assume 10' wide (likely shell hash or organics based upon return signature)
10:39:28	28	339307.74	1684589.77	3	1.1	6' long, 1' tall, assume 5' wide
11:33:56	29	346010.41	1675548.83	4	96.3	26' long 2.5' Tall, assume 40' wide (likely associated with anomalies in lines 2 and 4, may be organic due to weak signature)
11:37:27	30	345679.93	1676287.6	4	1	5' long, 1.5' tall, assume 5' wide
11:37:52	31	345637.19	1676368.45	4	1.7	10' long 1' tall assume 5' wide
11:38:12	32	345596.74	1676434.94	4	3.7	10' long, 1' tall, 10' wide
11:41:13	33	345275.19	1677019.73	4	1.2	6' long, 1' tall, assume 5' wide
11:43:41	34	345029.4	1677516.94	4	1	5' 1' x assumed 5'
11:44:07	35	344982.94	1677601.59	3	1	small anomaly
11:46:52	36	344700.57	1678166.9	3	1	5' long 1' tall assume 5' wide
11:47:23	37	344642.95	1678271.87	3	1	small anomaly
11:49:46	38	345673.8	1675804.9	2	5.6	15' long 2' tall assume 5' wide
11:51:18	39	344193.12	1679008.2	4	1.2	6' long 1' all assume 5' wide (apart of larger anomaly field with multiple targets in vicinity)
11:51:34	40	344157.19	1679055.67	3	1.2	6' long, 1' tall, assumed 5' wide (apart of larger anomaly field with multiple targets in vicinity)

*Depth: Estimated depth below seafoor to reach target.

** Volume: Estimated volume of debris provided as actual volume may vary and should be field verified.

543 Harbor Boulevard, Suite 204
 Destin, Florida 32541
 (904) 854-1555
 (904) 854-1555 (toll) • 850.654.0500 (fax)
 www.mrd-associates.com



NOTES:
 • Drawing is referenced to Florida State Plane, North Zone
 MADS, feet.
 • Additional debris may be present beyond the identified debris targets presented.
 • Debris targets shall be field-verified prior to removal

TABLE OF DEBRIS REMOVAL TARGETS (1 of 2)
 MB Nearshore Debris Removal Permit Sketches
 DEWBERRY ENGINEERS, INC.
 324 Malina Drive, Port St. Joe, FL 32456

DESIGNED BY: **MRD**
 DATE: February 27, 2023
 REV DATE:
 REV #:
 DRAWN: JPN
 REVIEWED:
 PROJECT NUMBER:
 23-139
 SHEET NUMBER:
 10

11:51:43	41	344140.12	1679081.94	3	1.7	20' long 1.5' tall, assume 10' wide (apart of larger anomalie field with multiple targets in vicinity)
11:52:30	42	344050.15	1679233.37	3	1.8	20' long 1.5' tall, assume 10' wide (apart of larger anomalie field with multiple targets in vicinity)
11:53:44	43	343910.09	1679477.86	2	1.3	7' long, 1' tall, 5' wide
11:58:46	44	343275.35	1680409.67	3	8.3	30' long, 1.5' tall, assume 5' wide
12:01:30	45	342897.22	1680877.33	2	7.5	10' long 2' tall assume 10' wide
12:01:37	46	342877.95	1680896.92	2	3.1	10' long 1' tall assume 10' wide
12:02:39	47	342740.66	1681079.9	3	37	20' long 2.5' tall assume 20' wide
12:02:55	48	342698.98	1681119.81	3	9.3	10' 2.5' tall assume 10' wide
12:03:31	49	342603.22	1681205.1	3	1.8	10' 1' assume 5' wide
12:03:38	50	342585.4	1681222.29	2	1	small anomaly
12:04:07	51	342517.23	1681299.41	2	5.6	10' long 1.5' tall assume 10' wide
12:04:52	52	342404.19	1681413.15	4	5.6	10' long 1.5' tall assume 10' wide (multiple targets in vicinity (<50'))
12:06:05	53	342209.79	1681595.35	3	3	6' long 2' tall assume 10' wide
12:06:21	54	342170.36	1681638.41	3	91	41' long 3' tall assume 20' wide (apart of a large cluster)
12:06:44	55	342115.08	1681707.44	3	63	34' long 2.5' tall assume 20' wide
12:06:55	56	342085.93	1681729.35	3	45.6	41' long 3' tall assume 10' wide (apart of a large cluster)
12:08:00	57	341924.55	1681892.02	3	103	70' long 2' tall assume 20' wide (apart of a large cluster of anomalies)
12:09:12	58	341738.47	1682069.12	3	16.7	30' long 1.5' tall 10' wide
12:09:50	59	341651.07	1682169.52	3	40.7	55' long 2' tall assume 10' wide (large cluster)
12:10:39	60	341530.77	1682291.38	3	22.2	30' long 2' tall assume 10' wide (apart of a large cluster)
12:14:44	61	340957.49	1682964.32	2	270	50' long 5' tall 30' wide (likely large cluster of shells/organics)
12:18:09	62	340460.47	1683506.21	2	41.6	50' long 1.5' tall assume 15' wide (two large anomalies close together)
12:19:01	63	340331.44	1683641.41	2	18.5	25' long 2' tall assume 10' wide
12:21:13	64	340000.46	1683984.84	2	1.1	20' long 1' tall assume 10' wide
12:23:37	65	339648.07	1684357.79	3	28	30' long 2.5' tall assume 10' wide (large anomalie)
12:31:29	66	338437.16	1685558.99	3	1.9	10' long 1't all assume 5' wide
12:33:02	67	338190.61	1685800.13	3	3.7	20' long 1' tall assume 5' wide
12:36:01	68	337719.72	1686237.7	3	1.9	5' long 2' tall assume 5' wide
12:36:34	69	337636.15	1686323.61	3	5.6	15' long 1' tall assume 10' wide
14:24:04	70	346184.64	1674413.16	3	7.4	20' long 2' tall assume 5' wide
14:24:13	71	346177.31	1674447.88	3	2.8	15' long 1' tall assume 5' wide
14:24:38	72	346151.36	1674536.41	2	3.9	14' long 1.5' tall, assume 5' wide
14:24:55	73	346127.39	1674598.14	2	1.7	6' long 1.5' tall assume 5' wide
14:26:28	74	345997.38	1674945.49	2	3.3	12' long 1.5' tall assume 5' wide

# of Targets Identified	74
Estimated Volume Range** (Cubic Yards)	1 to 270
Total Volume** (Cubic Yards)	1098

*Depth: Estimated depth below seafloor to reach target.

** Volume: Estimated volume of debris provided as actual volume may vary and should be field verified.

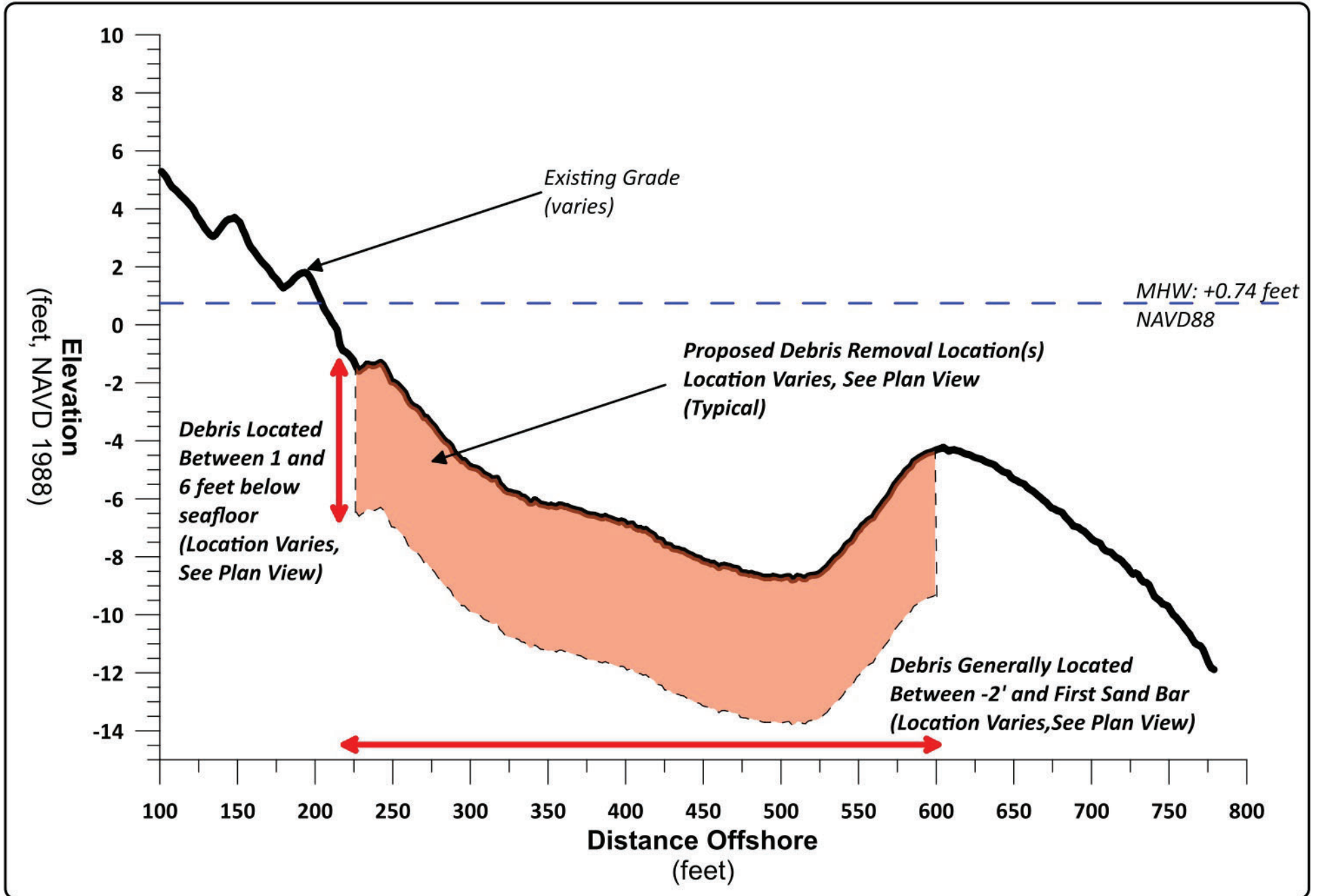
543 Harbor Boulevard, Suite 204
Destin, Florida 32541
(910) 398-1111
850.654.1555 (toll free) # 850.654.0500 (fax)
www.mrd-associates.com



NOTES:
 • Drawing is referenced to Florida State Plane, North Zone NAD83, feet.
 • Additional debris may be present beyond the identified debris targets presented.
 • Debris targets shall be field-verified prior to removal.

TABLE OF DEBRIS REMOVAL TARGETS (2 of 2)
MB Nearshore Debris Removal Permit Sketches
 DEWBERRY ENGINEERS, INC.
 324 Marina Drive, Port St. Joe, FL 32456

DESIGNED BY: **MRD**
 DATE: February 27, 2023
 REV DATE:
 REV R: DRAWN: JPM
 REVIEWED:
 PROJECT NUMBER:
 23-139
 SHEET NUMBER:
 11



mrd
 mrd associates, inc.
 Coastal, Marine & Water Resources Engineering

543 Harbor Boulevard, Suite 204
 Destin, Florida 32541

Certification of Authorization Number 9482
 850.654.1555 (voice) • 850.654.0550 (fax)
 www.mrd-associates.com

TYPICAL SECTION
MB Nearshore Debris Removal Permit Sketches

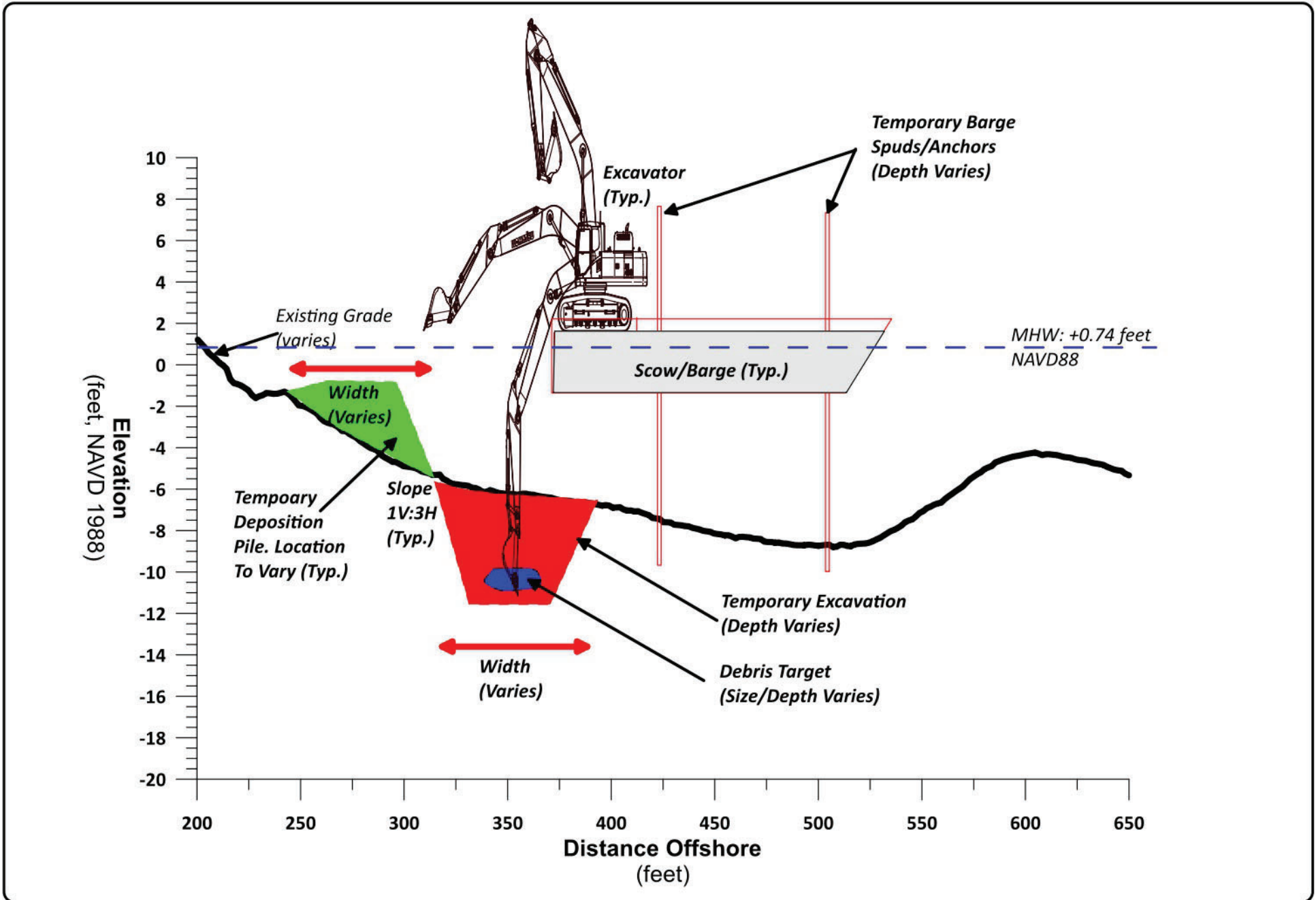
DEWBERRY ENGINEERS, INC.
 324 Marina Drive, Port St. Joe, FL 32456

Joseph Morrow, P.E.
 FL P.E. Number 87841

Date: February 27, 2023

Sheet Rev Date:

PROJECT NUMBER 23-139	SHEET NUMBER ^12^
--------------------------	----------------------



mrd
 mrd associates, inc.
 Coastal, Marine & Water Resources Engineering

543 Harbor Boulevard, Suite 204
 Destin, Florida 32541

Certification of Authorization Number 9482
 850.654.1555 (voice) • 850.654.0550 (fax)
 www.mrd-associates.com

TYPICAL BARGE SECTION
MB Nearshore Debris Removal Permit Sketches

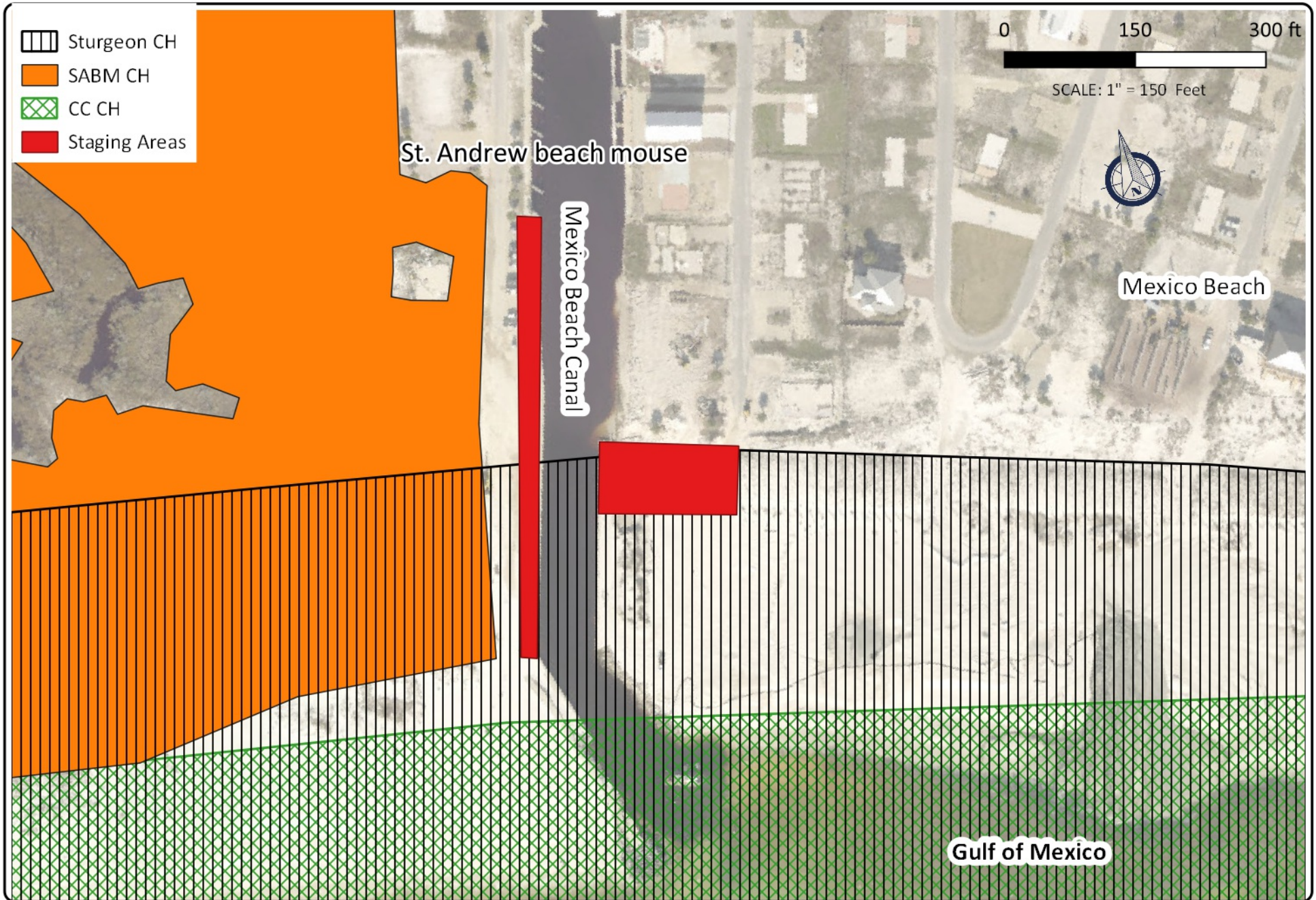
DEWBERRY ENGINEERS, INC.
 324 Marina Drive, Port St. Joe, FL 32456

Joseph Morrow, P.E.
 FL P.E. Number 87841

Date: February 27, 2023

Sheet Rev Date:

PROJECT NUMBER 23-139	SHEET NUMBER ^13^
---------------------------------	-----------------------------



mrd
 mrd associates, inc.
 A Coastal Protection Engineering Company

543 Harbor Boulevard, Suite 204
 Destin, Florida 32541

Certification of Authorization Number 9482
 850.654.1555 (voice) • 850.654.0550 (fax)
 www.mrd-associates.com

CRITICAL HABITAT WITHIN STAGING AREA
MB Nearshore Debris Removal Project

DEWBERRY ENGINEERS, INC.

17001 Panama City Beach Parkway, Panama City Beach, Florida 32413

Date: July 6, 2023	
Sheet Rev Date:	
PROJECT NUMBER	SHEET NUMBER
23-139	*2*

GENERAL NOTES:

- Cover and Index of Sheets
- Drawing and all coordinates referenced within relative to Florida State Plane North, North American Datum of 1983 (NAD 83).
- Elevations shown hereon are based on North American Vertical Datum of 1988 (NAVD 88).
- Topographic and Bathymetric survey performed by USACE, post-Sally LIDAR survey in 2020. Exact date unknown.
- Aerial photography obtained from ESRI World Imagery, fly date unknown.
- Debris was identified via a non-exhaustive survey utilizing a sub-bottom profiler on May 7 & May 11, 2021. No visual identification has been performed to date. Additional debris may be present beyond the targets identified.
- Debris size and volumes are provided as an estimate and should be field verified.
- Contractor shall be responsible for meeting applicable water quality standards during debris removal to include adequate turbidity controls to restrict debris removal activities to within the work area. BMP's shall be used at all times.

Debris Removal Guidelines

The following guidelines will be used to determine if the identified debris targets shall be removed from in-situ:

- F.A.C., Rule 62B-33.002 defines Construction Debris as the refuse, trash, or discarded material resulting from storm damage, or the construction or demolition of a structure. All debris discovered to meet this definition shall be removed.
- Natural or non-construction debris shall remain in-situ.
- Items determined to be greater than four (4) feet below the seafloor shall remain in-situ. If contractor begins to excavate an identified debris target verified in the field, and determines the debris extends beyond four feet from the seafloor, contractor shall make every effort to remove as much of the debris as possible.
- Contractor to utilize a floating barge and excavator or comparable equipment to excavate the identified buried debris targets.
- Sand excavated to reach a debris target shall be stockpiled immediately adjacent to the temporary excavation area and remain underwater. Suitable locations include landward or shore parallel to the temporary excavation location but not seaward of. Contractor shall make every effort to fill in temporary excavation location immediately after the debris has been removed with sand from the temporary stockpile.
- A CITY provided field representative will be on-site at all times to inspect the performance of the work. The field representative will have the authority to direct the contractor to remove specific debris and/or derelict materials identified in the field.
- Debris removal activities shall be limited to the immediate vicinity of the identified debris removal targets. Northings and Eastings referenced to the Florida State Plane, Zone North, NAD 83, feet have been provided as an approximate location of the identified debris targets.
- All debris removed will be disposed of in an appropriate upland disposal facility using the identified staging area(s).

Staging and Debris Offloading Areas

- Staging and debris offloading areas shall be restricted to the areas shown on the sketches.



mrd associates, inc.
Coastal, Marine & Water Resources Engineering

543 Harbor Boulevard, Suite 204
 Destin, Florida 32541

Certification of Authorization Number 9482
 850.654.1555 (voice) • 850.654.0550 (fax)
 www.mrd-associates.com

GENERAL NOTES

MB Nearshore Debris Removal Permit Sketches

DEWBERRY ENGINEERS, INC.

324 Marina Drive, Port St. Joe, FL 32456

Joseph Morrow, P.E. FL P.E. Number 87841	
Date: February 27, 2023	
Sheet Rev Date:	
PROJECT NUMBER 23-139	SHEET NUMBER *15*