

ORDINANCE 470

AN ORDINANCE VOLUNTARILY ANNEXING INTO THE MUNICIPAL LIMITS OF THE CITY OF MEXICO BEACH, FLORIDA, TRACTS OF UNINCORPORATED LAND LOCATED AT THE NORTH AND WESTERN PORTIONS OF THE PRESENT CITY LIMITS AND ADJACENT TO THE MEXICO BEACH CANAL; CONSISTING OF APPROXIMATELY 77.29 ACRES AND AS DESCRIBED IN THE ATTACHED EXHIBIT "A" AND GENERALLY SHOWN ON THE ATTACHED MAP; SAID LAND IS CONTIGUOUS TO THE MUNICIPAL LIMITS OF THE CITY OF MEXICO BEACH, FLORIDA, AS MORE PARTICULARLY DESCRIBED BELOW AND BY REFERENCE; AMENDING THE BOUNDARIES OF THE CITY TO INCLUDE SAID LAND; PROVIDING FOR SEVERABILITY; AND RECITING AN EFFECTIVE DATE.

BE IT ORDAINED BY THE CITY COUNCIL OF MEXICO BEACH, FLORIDA:

SECTION 1. The City of Mexico Beach, Florida does hereby voluntarily annex, at the request of the property owner(s) and pursuant to F.S. 171.044, the real property as described in Attachment "A", and made a part hereof as if fully set forth, unincorporated and contiguous parcels of property located in Bay County, Florida into the municipal limits of the City of Mexico Beach, Florida as described in Attachment "A". Said parcels consist of approximately 77.29 acres and are generally located on the map attached hereto as Attachment "B".

SECTION 2. At the request of the property owner the parcels of land described in Attachment "A" shall be voluntarily annexed into the municipal limits of the City of Mexico Beach, FL and any future land use designation shall be considered at a separate meeting and time.

SECTION 3. The boundaries of the City of Mexico Beach, FL are hereby amended and redefined so as to include the above-described property.

SECTION 4. The property owner shall be responsible for any and all recording fees for any development or recording fees or taxes that may become due and payable in the future.

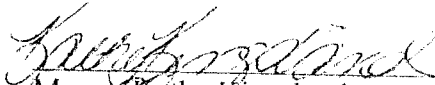
SECTION 5. should any part of this Ordinance be deemed invalid by a court of competent jurisdiction, the invalid parts shall be severed from the Ordinance and the remaining parts shall not be affected thereby.

SECTION 6. All ordinances or parts of ordinances in conflict herewith are hereby repealed to the extent of such conflict.

SECTION 7. This Ordinance shall become effective upon passage.


INTRODUCED at a Regular Meeting of the City Council on March 11, 2004, and
ADOPTED by the City Council at a Regular Meeting on April 13, 2004.

CITY OF MEXICO BEACH, FLORIDA




Mayor, Kathy Kingsland

Attest:



Clerk, Henry Flack

Approved as to Form:



City Attorney, Paul Komarek



Parcel 1

Begin at a GLO concrete monument marking the Southeast corner of Section 15, Township 6 South, Range 12 West, Bay County, Florida and run thence North 89 degrees 56 minutes 13 seconds West along the South boundary of said Section 15 for 1718.11 feet to the Northeasterly right of way line of U.S. Highway 98 (100 foot right of way); thence North 56 degrees 01 minutes 41 seconds West along said Northeasterly right of way line for 1216.82 feet to the center of Salt Creek; thence leaving said Northeasterly right of way line run Northeasterly along said center of Salt Creek as follows: North 40 degrees 29 minutes 30 seconds East for 123.94 feet; thence North 68 degrees 27 minutes 30 seconds East for 34.92 feet; thence North 88 degrees 41 minutes 10 seconds East for 86.08 feet; thence North 84 degrees 08 minutes 15 seconds East for 55.22 feet; thence North 30 degrees 38 minutes 29 seconds East for 105.20 feet; thence North 21 degrees 13 minutes 32 seconds East for 91.68 feet; thence North 55 degrees 37 minutes 18 seconds East for 60.34 feet; thence North 64 degrees 42 minutes 16 seconds East for 97.14 feet; thence North 42 degrees 09 minutes 22 seconds East for 117.68 feet; thence leaving said center of Salt Creek run South 53 degrees 33 minutes 11 seconds East for 538.70 feet; thence East for 1736.52 feet; thence South for 815.29 feet to the Point of beginning. Containing 45.67 acres, more or less.

Parcel 2

Commence at a GLO concrete monument marking the Southeast corner of Section 15, Township 6 South, Range 12 West, Bay County, Florida and run thence North 89 degrees 56 minutes 13 seconds West along the South boundary of said Section 15 for 1718.11 feet to the Northeasterly right of way line of U.S. Highway 98 (100 foot right of way); thence continue North 89 degrees 56 minutes 13 seconds West along the said South boundary for 179.25 feet to the Southwesterly right of way of said U.S. Highway 98 for the Point of beginning. From said Point of beginning continue North 89 degrees 56 minutes 13 seconds West along said South boundary and the North boundary of Block 14 of Mexico Beach Unit 7, a subdivision as per plat thereof recorded in Plat Book 8, Page 80 of the Public Records of Bay County, Florida for 743.39 feet to a found Saint Joe Paper Company concrete monument marking the Northwest corner of said Block 14; thence South 16 degrees 30 minutes 06 seconds West along the Westerly boundary of said Block 14 and Block 15 for 193.88 feet to the center of Salt Creek; thence leaving said Westerly boundary run Northwesterly along said Salt Creek as follows: North 33 degrees 25 minutes 10 seconds West for 50.37 feet; thence North 82 degrees 17 minutes 42 seconds West for 51.20 feet; thence North 76 degrees 50 minutes 58 seconds West for 61.95 feet; thence North 72 degrees 22 minutes 16 seconds West for 73.02 feet; thence North 63 degrees 15 minutes 08 seconds West for 105.64 feet; thence North 70 degrees 37 minutes 16 seconds West for 103.31 feet; thence North 82 degrees 44 minutes 42 seconds West for 180.23 feet; thence North 65 degrees 58 minutes 50 seconds West for 39.81 feet; thence North 56 degrees 09 minutes 12 seconds West for 71.84 feet; thence North 35 degrees 38 minutes 26 seconds West for 68.88 feet; thence North 52 degrees 39

minutes 25 seconds West for 136.95 feet; thence North 64 degrees 50 minutes 54 degrees West for 103.27 feet; thence North 60 degrees 07 minutes 13 seconds West for 86.41 feet; thence North 39 degrees 31 minutes 55 seconds West for 62.77 feet; thence North 15 degrees 50 minutes 19 seconds West for 94.47 feet; thence North 06 degrees 50 minutes 53 seconds East for 125.23 feet; thence North 28 degrees 38 minutes 52 seconds East for 42.48 feet; thence North 67 degrees 10 minutes 28 seconds East for 50.23 feet; thence North 47 degrees 18 minutes 08 seconds East for 60.39 feet; thence North 43 degrees 48 minutes 00 seconds East for 39.85 feet; thence South 88 degrees 58 minutes 44 seconds East for 84.98 feet; thence North 76 degrees 15 minutes 08 seconds East for 56.11 feet; thence South 86 degrees 20 minutes 14 seconds East for 78.20 feet; thence South 84 degrees 12 minutes 54 seconds East for 69.67 feet; thence South 68 degrees 03 minutes 03 seconds East for 68.16 feet; thence South 38 degrees 27 minutes 40 seconds East for 46.10 feet; thence South 24 degrees 28 minutes 10 seconds East for 41.16 feet; thence South 53 degrees 16 minutes 07 seconds East for 48.98 feet; thence South 37 degrees 27 minutes 29 seconds East for 58.35 feet; thence South 62 degrees 20 minutes 06 seconds East for 67.20 feet; thence South 74 degrees 41 minutes 56 seconds East for 87.55 feet; thence South 87 degrees 11 minutes 53 seconds East for 48.31 feet; thence North 82 degrees 50 minutes 40 seconds East for 48.91 feet; thence South 63 degrees 38 minutes 16 seconds East for 35.61 feet; thence North 59 degrees 41 minutes 50 seconds East for 29.66 feet; thence North 19 degrees 02 minutes 39 seconds East for 34.75 feet; thence North 52 degrees 39 minutes 13 seconds East for 38.88 feet; thence North 05 degrees 31 minutes 09 seconds West for 51.77 feet; thence North 20 degrees 10 minutes 44 seconds East for 39.08 feet to the said Southwesterly right of way line of U.S. Highway 98; thence South 56 degrees 01 minutes 41 seconds East along said Southwesterly right of way line for 1065.40 feet to the Point of beginning. Containing 17.94 acres, more or less.

Parcel 3

Commence at a GLO concrete monument marking the Southeast corner of Section 15, Township 6 South, Range 12 West, Bay County, Florida and run thence North 89 degrees 56 minutes 13 seconds West along the South boundary of said Section 15 for 1718.11 feet to the Northeasterly right of way line of U.S. Highway 98 (100 foot right of way); thence continue North 89 degrees 56 minutes 13 seconds West along the said South boundary for 179.25 feet to the Southwesterly right of way of said U.S. Highway; thence continue North 89 degrees 56 minutes 13 seconds West along said South boundary and the North boundary of Block 14 of Mexico Beach Unit 7, a subdivision as per plat thereof recorded in Plat Book 8, Page 80 of the Public Records of Bay County, Florida for 743.39 feet to a found Saint Joe Paper Company concrete monument marking the Northwest corner of said Block 14; thence South 16 degrees 30 minutes 06 seconds West along the Westerly boundary of said Block 14 and Block 15 for 193.88 feet to the center of Salt Creek for the Point of beginning. From said Point of beginning continue South 16 degrees 30 minutes 06 seconds West along said Westerly boundary and a projection thereof for 1157.49 feet to the mean high water line of the Gulf of Mexico; thence Northwesterly along said mean high water line as follows: North 73 degrees 32 minutes 51 seconds West for 49.77 feet; thence North 77 degrees 07 minutes 19 seconds West for

103.33 feet; thence North 77 degrees 26 minutes 24 seconds West for 100.86 feet; thence North 77 degrees 09 minutes 30 seconds West for 106.49 feet; thence North 77 degrees 10 minutes 08 seconds West for 103.24 feet; thence North 77 degrees 06 minutes 48 seconds West for 47.29 feet; thence leaving said mean high water line run North 16 degrees 30 minutes 06 seconds East for 1219.94 feet to the center of said Salt Creek; thence Southeasterly along said center of Salt Creek as follows: South 83 degrees 26 minutes 45 seconds East for 80.08 feet; thence South 70 degrees 37 minutes 16 seconds East for 103.31 feet; thence South 63 degrees 15 minutes 08 seconds East for 105.64 feet; thence South 72 degrees 22 minutes 16 seconds East for 73.02 feet; thence South 76 degrees 50 minutes 58 seconds East for 61.95 feet; thence South 82 degrees 17 minutes 42 seconds East for 51.20 feet; thence South 33 degrees 25 minutes 10 seconds East for 50.37 feet to the Point of beginning. Containing 14.08 acres, more or less.



NO.	DESCRIPTION	DATE	BY
1	REVISION		
2	REVISION		
3	REVISION		
4	REVISION		
5	REVISION		
6	REVISION		
7	REVISION		
8	REVISION		
9	REVISION		
10	REVISION		
11	REVISION		
12	REVISION		
13	REVISION		
14	REVISION		
15	REVISION		
16	REVISION		
17	REVISION		
18	REVISION		
19	REVISION		
20	REVISION		
21	REVISION		
22	REVISION		
23	REVISION		
24	REVISION		
25	REVISION		
26	REVISION		
27	REVISION		
28	REVISION		
29	REVISION		
30	REVISION		
31	REVISION		
32	REVISION		
33	REVISION		
34	REVISION		
35	REVISION		
36	REVISION		
37	REVISION		
38	REVISION		
39	REVISION		
40	REVISION		
41	REVISION		
42	REVISION		
43	REVISION		
44	REVISION		
45	REVISION		
46	REVISION		
47	REVISION		
48	REVISION		
49	REVISION		
50	REVISION		

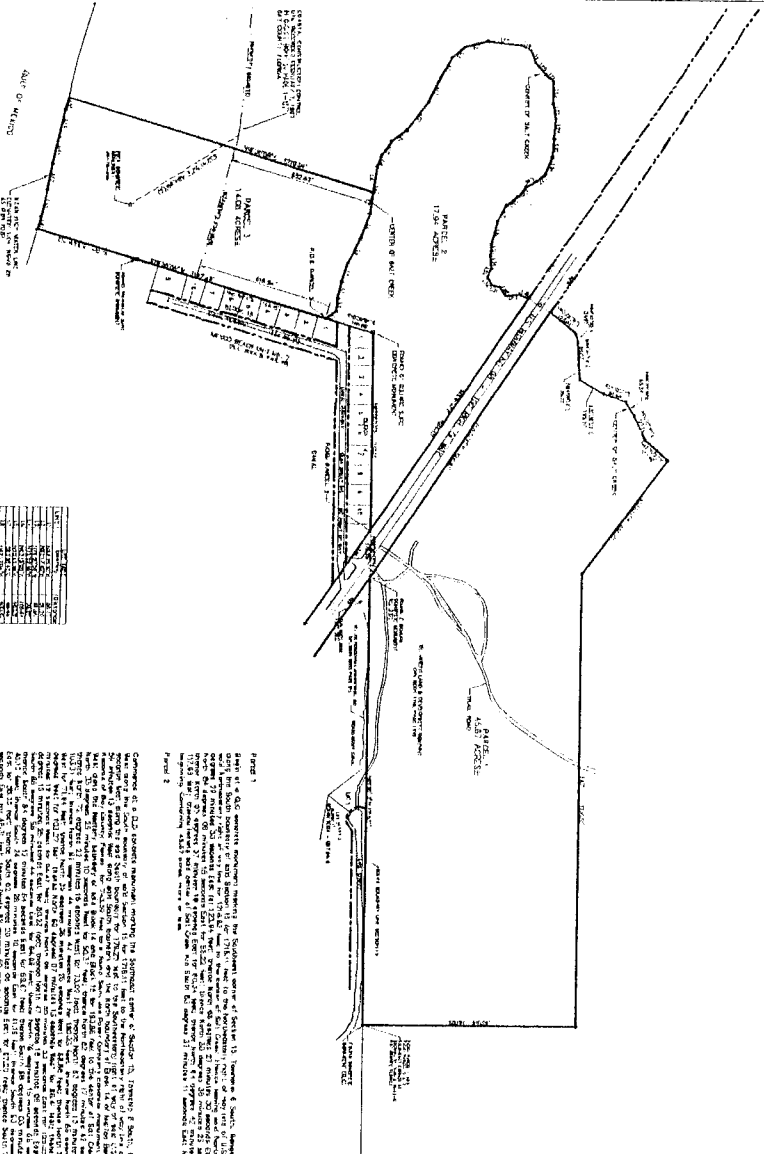


Figure 1
 This is a G.C. showing the location of the parcels shown on the plan. The parcels are located on the north side of Arvida Road, between Mexico Beach Road and St. Joe Road. The parcels are numbered 1 through 50. The plan also shows the location of the Arvida Canal, Arvida Dam, Arvida Weir, Arvida Sluice Gate, Arvida Control Building, Arvida Control House, Arvida Control Tower, Arvida Control Platform, Arvida Control Stairs, Arvida Control Lift, Arvida Control Escalator, and Arvida Control Elevator. The plan also shows the location of the Arvida Road, St. Joe Road, Mexico Beach Road, Arvida Canal, Arvida Dam, Arvida Weir, Arvida Sluice Gate, Arvida Control Building, Arvida Control House, Arvida Control Tower, Arvida Control Platform, Arvida Control Stairs, Arvida Control Lift, Arvida Control Escalator, and Arvida Control Elevator. The plan also shows the location of the Arvida Road, St. Joe Road, Mexico Beach Road, Arvida Canal, Arvida Dam, Arvida Weir, Arvida Sluice Gate, Arvida Control Building, Arvida Control House, Arvida Control Tower, Arvida Control Platform, Arvida Control Stairs, Arvida Control Lift, Arvida Control Escalator, and Arvida Control Elevator.

Figure 2
 This is a G.C. showing the location of the parcels shown on the plan. The parcels are located on the north side of Arvida Road, between Mexico Beach Road and St. Joe Road. The parcels are numbered 1 through 50. The plan also shows the location of the Arvida Canal, Arvida Dam, Arvida Weir, Arvida Sluice Gate, Arvida Control Building, Arvida Control House, Arvida Control Tower, Arvida Control Platform, Arvida Control Stairs, Arvida Control Lift, Arvida Control Escalator, and Arvida Control Elevator. The plan also shows the location of the Arvida Road, St. Joe Road, Mexico Beach Road, Arvida Canal, Arvida Dam, Arvida Weir, Arvida Sluice Gate, Arvida Control Building, Arvida Control House, Arvida Control Tower, Arvida Control Platform, Arvida Control Stairs, Arvida Control Lift, Arvida Control Escalator, and Arvida Control Elevator. The plan also shows the location of the Arvida Road, St. Joe Road, Mexico Beach Road, Arvida Canal, Arvida Dam, Arvida Weir, Arvida Sluice Gate, Arvida Control Building, Arvida Control House, Arvida Control Tower, Arvida Control Platform, Arvida Control Stairs, Arvida Control Lift, Arvida Control Escalator, and Arvida Control Elevator.



EXHIBIT "B"

PROJECT NO. 190 058		SHEET 1		BOUNDARY SURVEY MEXICO BEACH ST. JOE / ARVIDA ANNEXATION PARCELS				SCALE: AS SHOWN DESIGNED: DUB CHECKED: CP DATE: 2004		DATE: 2004 DRAWN: DUB CHECKED: CP DATE: 2004	
										NO. DATE BY 1 1/1/04 DUB 2 2/1/04 DUB 3 3/1/04 DUB 4 4/1/04 DUB 5 5/1/04 DUB 6 6/1/04 DUB 7 7/1/04 DUB	