

CITY OF MEXICO BEACH
WATER TANK AERATION SYSTEM



**ADDENDUM NO. 3
REQUESTS FOR INFORMATION**

Issued March 06, 2025

Per Addendum #2, bids are due on Wednesday March 12th, 2025 at 3:00 p.m. (CST).

The following questions were received from potential bidders and are being addressed below:

1. The revised base bid form has line item 2.3 listed as water pump and line item 2.26 listed as Xylem 6BF2H9B0 Close Coupled End Suction Pump 3 Phase 2.2 kW Pump. When we look at the drawings it seems like there is only one pump, which makes us think that there are two line items for the same pump.

City's Response to Request for Information Question No. 1: There is only one pump. See revised Bid Form attached (Attachment A).

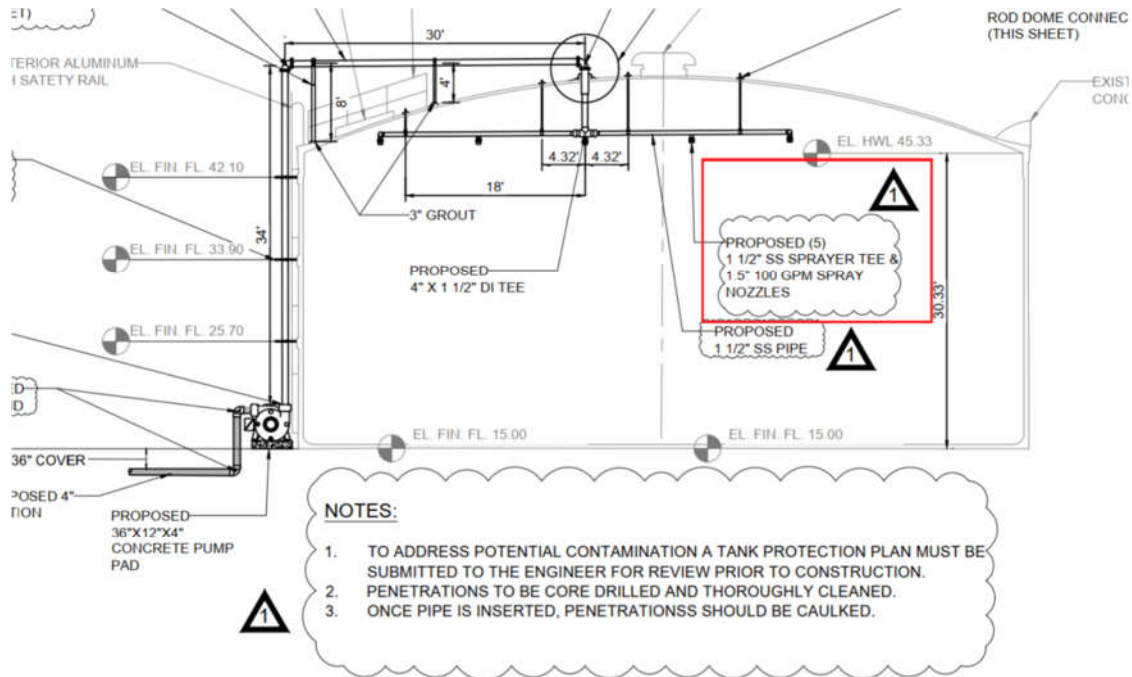
2. My second question is about the quantity of the 4x1.5 DI Spray Tees listed on line item 2.19. On the drawings we can only see 1 spray tee with that size, but the bid form calls for 5.

City's Response to Request for Information Question No. 2: There is only 1 4x1.5 DI Spray Tee. See revised Bid Form attached (Attachment A).

In addition to the above-received questions, the City makes the following additional modifications to this project.

3. For clarification, the Bid Form has been modified (Attachment A) to list the (5) 1 1/2" Stainless Steel Sprayer Tees and (5) 1 1/2" 100 GPM Spray Nozzles separately. See image below (next page) for reference.

REQUEST FOR QUALIFICATION 2025-03
CITY OF MEXICO BEACH
WATER TANK AERATION SYSTEM PROJECT



FRONT ELEVATION AERATION SYSTEM

SCALE: NTS

REQUEST FOR QUALIFICATION 2025-03
CITY OF MEXICO BEACH
WATER TANK AERATION SYSTEM PROJECT

ATTACHMENT A

Bid Form

BASE BID FORM					
Bid Item #	Description	Qty	Unit	Cost	Total
1. General Conditions					
1.1	Mobilization/Demobilization	1	LS	\$	\$
1.2	Performance and Payment Bonds	1	LS	\$	\$
1.3	Construction Testing	1	LS	\$	\$
2. Construction					
2.1	Tank Draining, Preparation & Disinfection	1	LS	\$	\$
2.2	Concrete Pump Pad	.04	CY	\$	\$
2.3	4" Ductile Iron Piping	83	LF	\$	\$
2.4	4" D.I. 45 Degree Bend	10	EA	\$	\$
2.5	4" D.I. 22.5 Degree Bend	1	EA	\$	\$
2.6	Tapping Sleeve & Valve 14"x4"	1	EA	\$	\$
2.7	D.I. MJ 4" Check Valve	1	EA	\$	\$
2.8	D.I. MJ 4" Gate Valve	1	EA	\$	\$
2.9	4" Ductile Iron Piping (Vertical)	80	LF	\$	\$
2.10	Exterior Pipe Brackets	3	EA	\$	\$
2.11	Water Spigot	1	EA	\$	\$
2.12	D.I. Pressure Gauge	1	EA	\$	\$
2.13	D.I. MJ 4" Control Valve	1	EA	\$	\$
2.14	Pipe supports and clamps	1	LS	\$	\$
2.15	4" D.I. Pipe (top of tank - outside)	30	LF	\$	\$
2.16	4" D.I. 90 Degree Bend	4	EA	\$	\$
2.17	3" Grout	2	EA	\$	\$
2.18	4x1.5" DI Sprayer Tee	1	EA	\$	\$
2.19	1.5" 100 GPM Spray Nozzles	5	EA	\$	\$
2.20	1.5" Stainless Steel Sprayer Tee	5	EA	\$	\$
2.21	Dome Probe Curb and associated components	1	EA	\$	\$
2.22	Hanger Rod Dome Connections	4	EA	\$	\$
2.23	Dome Pipe Support for 4" Pipe	1	LS	\$	\$
2.24	1.5" Stainless Steel Pipe (inside tank)	30	LF	\$	\$

BASE BID FORM					
Bid Item #	Description	Qty	Unit	Cost	Total
2.25	Combination Motor Starter with Overload Protection, Hand Off Auto Switch in Stainless Steel NEMA 4x Enclosure Sized for 480v 3Phase 2hp Motor & Float.	1	LS	\$	\$
2.26	Zylem 6BF2H9B0 Close Coupled End Suction Pump 3 Phase 2.2 kW Pump	1	LS	\$	\$
2.27	#10 Wire in 3/4" Conduit	189	LF	\$	\$
2.28	15A/3P Breaker Connection to Existing 480V Panel	1	LS	\$	\$
3. As-Builts					
3.1	As-Built Record Drawings to Owner	1	LS	\$	\$
TOTAL BASE BID (sum of Sections 1 through 3)					\$

Signature of Authorized Representative of BIDDER:

_____ Date: _____

Notes:

1. Bid Items listed above are further detailed in the *Measurement and Payment* Section of this Invitation to Bid package.